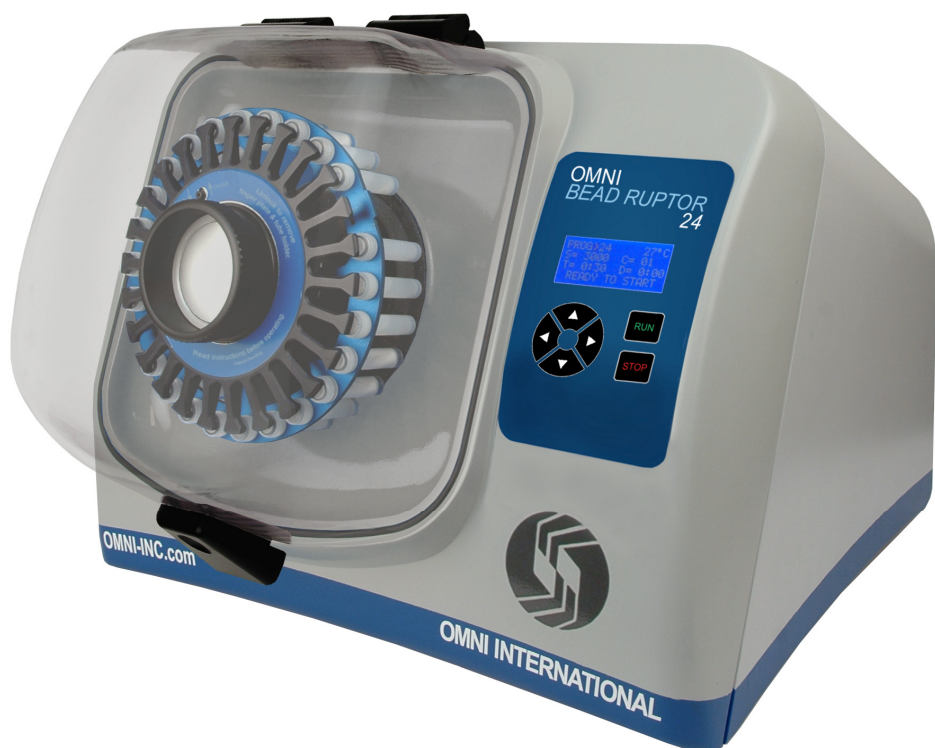


***Toughest Samples.  
Fastest Results.***

# OMNI ***BEAD RUPTOR***

## **Bead Mill Homogenizer**



- Convenient Front-Loading Design
- Consistent & High-Quality Results
- No Cool-Down Between Runs
- Broadest Performance Range: 0.8m/s—8m/s
- Compatible with 0.5mL, 2mL & 5mL Sample Tubes



**[www.omni-inc.com](http://www.omni-inc.com)**

**Convenient front-loading tube holder design**

**Easy-To-Use Keypad**

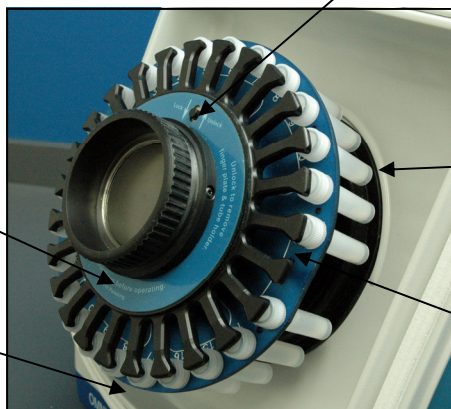
- 99 programmable memory settings
- Broad speed range for any type of sample processing
- Multi-lingual user interface



**Homogenize up to 24 samples per cycle**

**Advanced sample temperature monitoring system**

**Unique proprietary switch for additional safety**



**Finger Plate**

**Waterproof seal**

**Reservoir**

**Tube Carriage**

The **Omni Bead Ruptor 24** is the newest generation of bead mill homogenizers. This system is specifically designed for the grinding, lysing and homogenization of biological samples prior to any molecular extractions.

Using sample tubes pre-filled with a variety of lysing beads, the Bead Ruptor 24 vigorously and uniformly shakes the tubes providing an efficient, consistent, high-yield and quality homogenization usually in less than 40 seconds.

The Omni Bead Ruptor 24 is an ideal solution for releasing DNA, RNA, proteins, enzymes, etc. from very tough samples while still retaining molecular integrity.



## Product Features:

- Simultaneously homogenize either 24 x 2mL or 12 x 5mL tubes
- Convenient front-loading tube holder position for ease of use and optimal bead/sample interactions
- Broad speed range for any type of sample processing
- High reproducibility: number of cycles, time, speed, dwell/pause
- No Cool-down required between runs: process hundreds of samples per day
- 99 programmable memory settings
- Advanced sample temperature monitoring system
- Multi-lingual user interface
- Disposable tubes ensure no threat of cross-contamination or sample degradation

# Omni Bead Ruptor Lysing Tubes are available pre-filled with a variety of bead types.

Our lysing tubes are ideally suited for nucleic acid, drug, proteins, enzymes, virus etc. extractions. **Tubes are RNase & DNase free.**

Efficiently lyse with or without buffer:

- Human
- Animal
- Plant and food
- Micro-organisms
- Soil and sediments
- Forensic, swabs, feces
- Drugs, polymers, lotions etc.



### **1.4mm & 2.8mm Ceramic Beads**

Ideal for soft animal, plant or human tissues:

- brain
- liver
- skin
- leaves
- gonad
- muscle, etc.



### **0.15mm & 0.7mm Garnet Beads**

"Universal" bead mix

- Good for tough samples
- Not for use with soil



### **2.38mm Metal Beads**

Ideal for any hard tissue types:

- hair
- teeth
- bones
- seeds
- corn
- rice



### **0.25 Carbide Beads**

Ideal for microbial and soil RNA

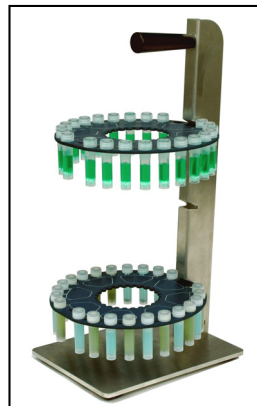


### **0.1mm & 0.5mm Glass Beads**

Ideal for microorganisms

Optimal for:

- spores
- fungi
- yeast
- e-coli, etc.



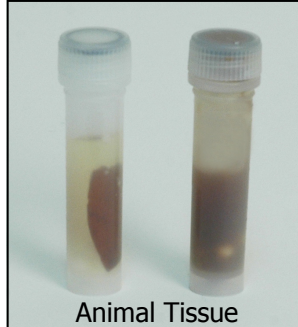
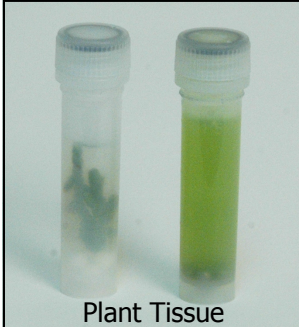
Unique Bead Ruptor Tube Rack for sample storage down to -80°C.

## The Omni Bead Ruptor 24 is ideally suited for:

- DNA / RNA electrophoresis
- Northern, Southern, Western blot analysis
- Liquid chromatography
- Enzyme isolation
- Protein purification and production
- Food safety, GMO detection
- Cosmetic preparation
- Environmental surveys
- BSE Screenings
- Drug detections
- qPCR, RT-PCR
- And many more....



### Before & After



### Specifications:

**Processing Range:** 25 $\mu$ L to 5mL

**Power Rating:** 100-230 VAC/ 50-60 Hz

**Dimensions:** 15.5" (W) x 17" (D) x 13" (H) [24" tall with lid open]

**Weight:** 24 kg (54 lbs.)

**Compliance:** CE Compliance

**Run Time:** 1 second—9:59 minutes

**Number of Programs:** 99 Saved Programs

**Number of Cycles:** 1—10

**Performance Range:** 0.8m/s—8m/s by 0.15m/s increments



Below are recommended settings for the Bead Ruptor 24.

Actual settings will vary based on sample conditions.

Detailed application notes can be found at

[www.omni-inc.com/applications](http://www.omni-inc.com/applications)

Sample Name and Type		BEAD MATRIX	SETTING	APPLICATION
Lysing matrix		Lysing matrix	Speed – number of cycle x time - pause	Note
<b>MICROBIAL</b>	Bacteria	Garnet 0.15mm	3.25m/s – 1 x 5 min – 0s	DNA isolation
	Muscle	Ceramic 2.8mm	5.65m/s – 2 x 45 sec. – 30 sec.	RNA isolation
	Brain	Ceramic 2.8mm	5.65m/s – 2 x 45 sec. – 30 sec.	RNA isolation
<b>ANIMAL</b>	Liver	Ceramic 2.8mm	5.65m/s – 2 x 45 sec. – 30 sec.	RNA isolation
	Kidney	Ceramic 2.8mm	5.65m/s – 2 x 45 sec. – 30 sec.	RNA isolation
	Lung	Ceramic 2.8mm	5.65m/s – 2 x 45 sec. – 30 sec.	RNA isolation
	Heart	Ceramic 2.8mm	5.65m/s – 2 x 45 sec. – 30 sec.	RNA isolation
	Spleen	Ceramic 2.8mm	5.65m/s – 2 x 45 sec. – 30 sec.	RNA isolation
	Leaves	Ceramic 2.8mm	6.95m/s – 2 x 45 sec. – 30 sec.	RNA isolation
	Leaves	Metal 2.38mm	3.25m/s – 1 x 3 min	DNA isolation
<b>PLANT</b>	Seeds	Metal 2.38mm	4.7m/s – 1 x 3 min	DNA isolation
	Stems	Ceramic 2.8mm	6.95m/s – 2 x 45 sec. – 30 sec.	RNA isolation
	Stems	Metal 2.38mm	3.55m/s – 1 x 3 min.	DNA Isolation
	Roots	Ceramic 2.8mm	6.95m/s – 2 x 45 sec. – 30 sec.	RNA isolation
	Root	Metal 2.38mm	4m/s – 1 x 3 min	DNA isolation
	Flowers	Ceramic 2.8mm	6.95m/s – 2 x 45 sec. – 30 sec.	RNA isolation
<b>SOIL</b>	Soil	Garnet 0.7mm	3.25m/s – 1 x 5 min	DNA isolation



935-C Cobb Place Blvd.  
 Kennesaw, GA 30144  
 Phone: 800-776-4431  
 Fax: 770-421-0206  
[omni@omni-inc.com](mailto:omni@omni-inc.com)

[www.omni-inc.com](http://www.omni-inc.com)