

# OMNI

## *BEAD RUPTOR 12*

### Bead Mill Homogenizer

Processing Range: 25µL-1.8mL

- Simultaneously homogenize up to 12 x 2mL or 0.5mL tubes
- Convenient front-loading tube holder position for ease of use and optimal bead/sample interactions
- Processing range is ideal for soft tissue samples
- No Cool-down required between runs = non-stop processing
- Disposable tubes ensure no threat of cross-contamination
- No sample degradation due to quick processing
- Smaller footprint to maximize bench space

#### Omni Bead Ruptors are ideally suited for:

- DNA / RNA electrophoresis & blotting
- Mass spectrometry
- Enzyme isolation
- Protein purification
- Food safety, GMO detection
- Cosmetic preparation
- Environmental surveys
- BSE Screenings
- Drug detections
- qPCR, RT-PCR
- And many more....



 **OMNI**  
International  
The Homogenizer Company™

[www.beadruptor.com](http://www.beadruptor.com)

**Omni Bead Ruptors** are the newest generation of bead mill homogenizers. These systems are specifically designed for grinding, lysing and homogenization of any biological sample prior to any molecular extractions.

Using sample tubes pre-filled with a variety of lysing beads, the Bead Ruptor I2 vigorously and uniformly shakes the tubes providing an efficient, consistent homogenization and high-yield.

## Omni Bead Ruptor Lysing Kits are available pre-filled with a variety of bead types.

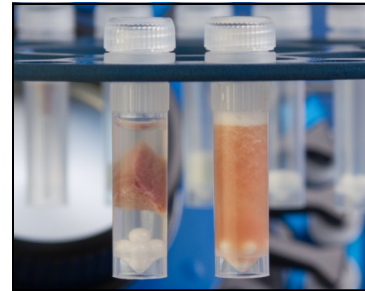
Our lysing tubes are ideally suited for nucleic acid, drug, proteins, enzymes, virus etc. extractions.

**Tubes & Beads are available RNase & DNase free or untreated.**

Efficiently lyse with or without buffer:

- Human
- Animal
- Plant and food
- Micro-organisms
- Soil and sediments
- Forensic, feces
- Drugs, polymers, lotions etc.

### Before & After



#### Ceramic Beads

Ideal for soft animal, plant or human tissues:

- Brain
- Liver
- Leaves
- Muscle, etc.

#### Glass Beads

Ideal for microorganisms. Optimal for:

- Spores
- Algae
- Yeast
- E-coli, etc.

#### Metal Beads

Ideal for hard tissue types:

- Roots
- Pine needles
- Arabidopsis

#### Garnet Beads

- Soil

#### Carbide Beads

Ideal for microbial and soil RNA



#### Bead Ruptor I2 Specifications

**Processing Range:** 25µL to 1.8mL

**Power Rating:** 100-230 VAC/ 50-60 Hz

**Dimensions:** 12" (W) x 17" (D) x 14.5" (H) [22" wide with lid open]

**Weight:** 24 kg (54 lbs.)

**Compliance:** CE Compliance

**Run Time:** 1 second—99 seconds

**Number of Programs:** 1 Storable Program

**Number of Cycles:** 1

**Performance Range:** 3m/s - 5m/s in increments of 1m/s

**Visit our Application Database to find the right homogenizing solution for your specific sample types!**

[www.omni-inc.com/apps](http://www.omni-inc.com/apps)