



Card index S9-6

Worktop postformed laminated th. 28 mm self supporting



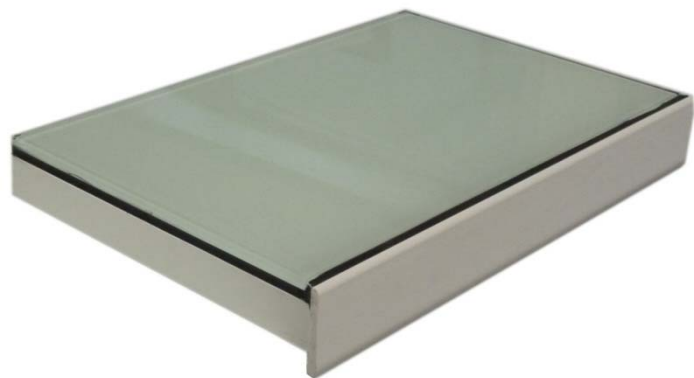
- Self-supporting panel composed of a laminate postformed hot, glued on an agglomerate support type of waterproof CTBH, overall thickness of 28 mm.
- White edge, finish with double rounded in front.
- Great possible length without joints (Standard dimensions up to 1.8 meters, higher dimensions up to 3 meters : on request only).
- Silicone joint black (standard), white or gray. Other types of joints available on request

Details of materials used	Specifications
"XLA" (TradeMark POLYREY)	<ul style="list-style-type: none">- Decorative high pressure laminate, postforming quality- Decorative coatings consisting of several layers of cellulose and melaminated decorative paper polymerized under the action of high pressure and heat.- Provides all the guarantees of durability and safety of HPL laminated products.- Good impact resistance.- Colors perfectly stable over time.- Easy cleaning of the non porous work surface and with few joints.



Card index S9-1

Worktop enamelled glass



- Glass "Securit" 6 mm thick glued on waterproof chipboard support 22 mm thick white melamine on all edges.
- No lead and no dangerous products for a better respect of the environment
- Tempered glass complies with standard EN 12150.
- Edges white PVC thickness 4 mm and height 40 mm, assembled by spline and groove.
- Silicone joint black (standard), white or gray. Other types of joints available on request.

Details of materials used	Specifications
"Emalit Evolution" (Trademark Saint Gobain)	<ul style="list-style-type: none">- - Provides all the guarantees of durability and safety of enamelled tempered products- Colors perfectly stable over time- Outstanding resistance to moisture as well as to chemicals and corrosives (except hydrofluoric acid, which obscures the glass)- Resistance to differences in temperature of about 150/200°C- Easy cleaning of the work surface

Within the evolution of its products, EQUIP LABO is reserving oneself full liberty of any possibility of modifications



Card index S9-2

Worktop ceramic tile on waterproof support



- Ceramic "stretched" "KerAion" 8 mm thick glued on waterproof chipboard support 22 mm thick white melamine on all edges.
- Enamelled ceramic complies with standard NF EN 121-A1
- Edges white PVC thickness 4 mm and height 40 mm, assembled by spline and groove.
- Length of tiles 600, 750 or 900 mm
- Silicone joint black (standard), white or gray. Other types of joints available on request (polyurethan, epoxy resin, ...).

Details of materials used	Specifications
"KERAION" (Trademark AGROB BUCHTAL)	<ul style="list-style-type: none"> - Provides all the guarantees of durability and safety of products in enamelled ceramic - Very good resistance to impact and abrasion - Colors perfectly stable over time - Outstanding resistance to moisture as well as to chemicals and corrosives (except hydrofluoric acid and its compounds) - Fire resistance M0, noncombustible - Easy cleaning of the non porous work surface and with few joints



Card index S9-7

Worktop resin COMPACT EXPRESS

on support



- Panel COMPACT EXPRESS 8 mm thick glued on waterproof chipboard support 22 mm thick, white melamine on all edges.
- Edges white PVC thickness 4 mm and height 40 mm, assembled by spline and groove.
- Great possible length without joints (Standard dimensions up to 1.8 meters, higher dimensions up to 3 meters : on request only).
- Silicone joint black (standard), white or gray. Other types of joints available on request (polyurethan, epoxy resin, ...).

Details of materials used	Specifications
"COMPACT EXPRESS" (Trademark FORMICA)	<p>The decorative laminated panel high pressure Formica[®] are made of paper impregnated with synthetic resins (melamine resins Formalin for surface paper and overlay, phenolic resins for the kraft paper forming the support) according to European standard EN 438-1.</p> <ul style="list-style-type: none">- Provides all the guarantees of durability and safety of products FORMICA- Good impact resistance- Colors perfectly stable over time- Fire resistance M1- Easy cleaning of the non porous work surface and with few joints.

Worktop resin TRESPA ATHLON on
waterproof support



- Panel TRESPA ATHLON 8 mm thick glued on waterproof chipboard support 22 mm thick, white melamine on all edges
- Edges white PVC thickness 4 mm and height 40 mm, assembled by spline and groove.
- Great possible length without joints (Standard dimensions up to 1.8 meters, higher dimensions up to 3 meters : on request only).
- Silicone joint black (standard), white or gray. Other types of joints available on request (polyurethan, epoxy resin, ...).

Details of materials used	Specifications
<p>"ATHLON" (Trademark TRESPA)</p>	<ul style="list-style-type: none"> - Coating based decorative thermosetting synthetic resins, homogeneously reinforced with cellulose fibers and manufactured under high pressure (+ / - 100 kg/cm²) at high temperature (+ / - 150°C) - Provides all the guarantees of durability and safety of TRESPA products - Good impact resistance - Colors perfectly stable over time - Fire resistance M1 and F1 - Easy cleaning of the non porous work surface and with few joints.

THE VARIOUS WORKTOPS

WORKTOP	COMPOSITION	DIMENSIONS	TECHNICAL SPECIFICATIONS	USES
<u>POSTFORMED LAMINATE</u>	Several layers of kraft paper impregnated of phenolic resin	Length : 600, 900, 1200, 1500, or 1800. Depth : 600 ou 750. Thickness : 28 mm.	Heat resistance at 180° Resistance to common household products Good resistance to light Shocks resistance	Physics, electronics, material testing and school laboratories For non-corrosive products
<u>ENAMELLED GLASS</u>	Tempered glass bonded in factory on a waterproof chipboard (unleaded)	Length : 600, 900, 1200, 1500, or 1800. Depth : 600 ou 750. Thickness : 6 mm + Waterproof support : 22 mm.	Resistance to mechanical shocks Resistance to flexion Resistance to heat constraints	For all type of laboratories particularly where there are problems of cleaning and decontamination
<u>CERAMIC TILE ON WATERPROOF SUPPORT</u>	Material with the characteristics of glazed stoneware and the flatness of the enamelled glass. Glued and jointed in factory on a waterproof chipboard.	Length : 600, 900, 1200, 1500, or 1800. Depth : 600 ou 750. Thickness : 8 mm + Waterproof support : 22 mm.	Non-porous surface so working conditions where hygiene is perfect Resistance to flexion Resistance to pressure Resistance to UV Resistance to acids and chemicals except hydrofluoric acid	Chemistry, physics and biology laboratories Use of corrosive products Sciences, medical, pharmaceutical and food-processing laboratories
<u>COMPACT RESIN ON WATERPROOF SUPPORT</u>	Decorative high pressure laminate consisting of layers of kraft impregnated of phenolic resin and 2 decorative films impregnated of aminoplast resin on the external faces	Length : 600, 900, 1200, 1500, or 1800. Depth : 600 ou 750. Thickness : 8 mm + Waterproof support : 22 mm.	Excellent mechanical resistance like shocks, flexion, tensile and heat Average moisture resistance	Like laminate but with better resistance to humidity
<u>TRESPA ATHLON</u>	synthetic resin with high resistance reinforced evenly by wood fibers	Length : 600, 900, 1200, 1500, or 1800. Depth : 600 ou 750. Thickness : 8 mm + Waterproof support : 22 mm.	Excellent resistance to vapor, abrasion and humidity Resistance to chemicals Great resistance to shocks Excellent behaviour to fire	Like enamelled glass : For all type of laboratories particularly where there are problems of cleaning and decontamination And more : Physics and electronics laboratories