



0-1000  
ppb

# Phosphate Test Kit

Low Range

30 Tests - easy and accurate

## Contents

- 1 Colour card
- 1 Stirring rod, length 13 cm
- 1 Test vial & stopper
- 30 Phosphate No.1 tablets
- 30 Phosphate No.2 tablets
- 1 Instruction Manual

Distributed By:



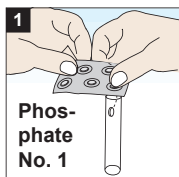
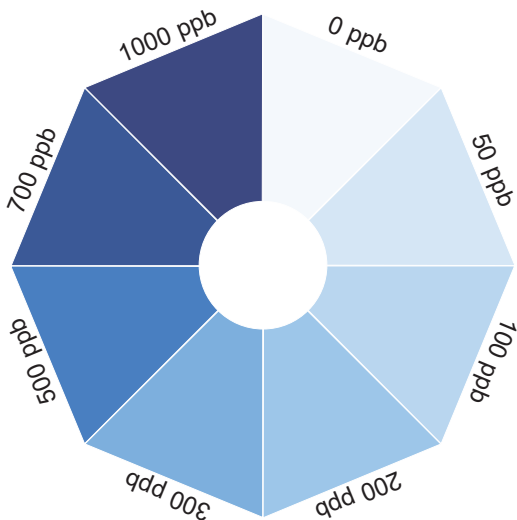
**camlab**

Giftnotruf Berlin, Germany  
Poison Center Berlin, Germany  
Tel.: (+49) (0)30 / 30 686 790

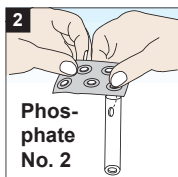
Technical changes without notice  
Printed in Germany, 07/17

No.: 00 38 55 01

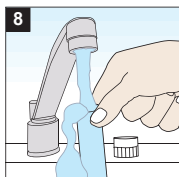
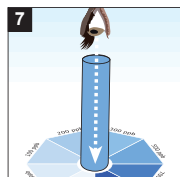
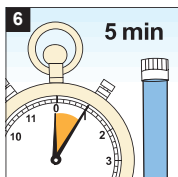
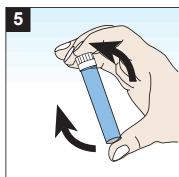
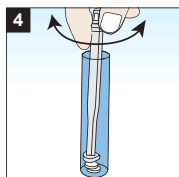
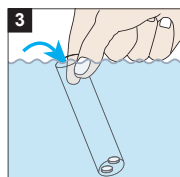
1000 ppb = 1 mg/l PO<sub>4</sub>



**1**  
Phos-  
phate  
No. 1



**2**  
Phos-  
phate  
No. 2



- 1 +2 Add tablet reagents to empty vial.
- 3 Fill vial completely with sample.
- 4 Crush tablets by twisting the stirring rod. Spill over of a bit sample while immersing the rod is normal and leads to a defined volume in the vial.
- 5 Sway vial until tablets are completely dissolved.
- 6 +7 After 5 minutes compare colour with colour card and get result.
- 8 Rinse vial and stopper with drinking water.