

**Sartorius Extend**  
The new achievers  
for your lab

# The New Sartorius Extend Series

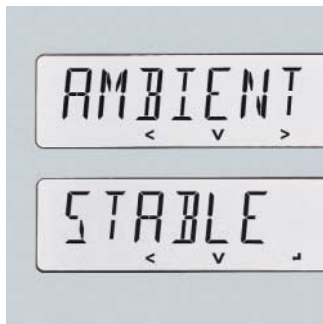
The difference is...  
the latest technology



If you compare the specifications of many lab balances on paper, they all look the same – if you've seen one, you've seen them all. But in the real world, there is more to a lab balance than just its technical specifications.

The new Sartorius Extend series has been specially designed for effective and reliable weighing in daily lab routines. This is where more powerful technology and application-orientated operation and features make all the difference.

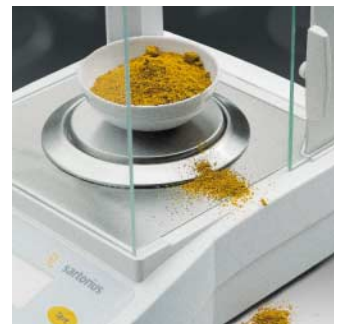
More versatility in high-resolution applications: 1 mg to 620 g and 10 mg to 6,200 g. Sartorius makes top-of-the-line technology at reasonable cost... the new level of excellence.



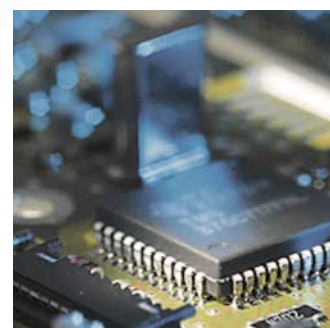
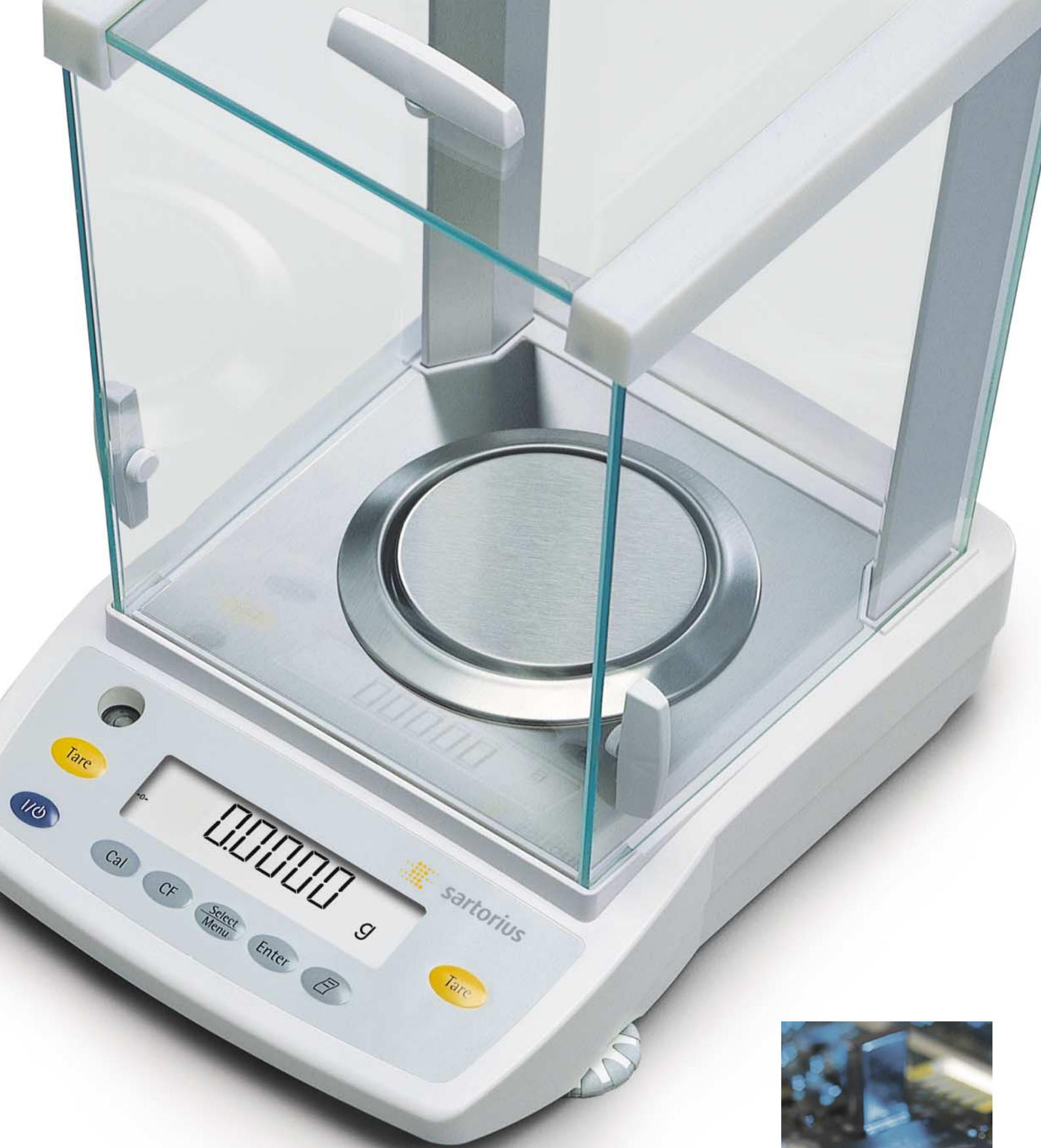
Reliable weighing results, all of the time – even under less than ideal ambient conditions, thanks to the Extend's highly sophisticated digital compensation algorithms.



Sartorius utilise 21st century technology, such as our unique robotically etched monolithic weigh cell, which ensures long-term, high accuracy and minimises the effects of temperature drift. It provides the legendary dependability that users the



world over have come to appreciate in a genuine Sartorius lab balance. Also, the novel housing finish of the Extend series is made to withstand many aggressive solvents, such as acetone and ethanol.



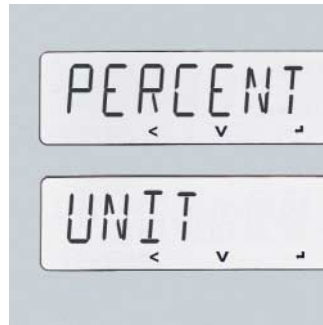
The Extend series features the latest powerful microprocessor technology, shortening the response times for faster results than most basic or standard level balances.

# The New Sartorius Extend Series

The difference is...  
ease of use



Fast cleaning and rugged design: The side doors, top sliding door and all stainless steel parts of the analytical draft shield chamber are easy to remove for convenient and thorough cleaning.



User-friendly operation: Short, plain-English text prompts and cursor keys for navigation make it simple for you to configure the balance to meet your individual requirements.



The level indicator is positioned conveniently right next to the display so that checking whether the balance is level becomes "second nature" to the operator. What's more, all keys feature positive click action.



Outstanding readouts thanks to the backlit and high-contrast display (height of digits: 15 mm)

**The new Sartorius Extend Series: The solution to eliminate complicated and tedious routines**

When you need to get a heavy workload of repetitive applications done fast and reliably, day in and day out, the last thing you need is a lab balance so complicated that it causes operating errors and wastes your valuable time as a result.

**Welcome to your new Extend balance comfort zone:**

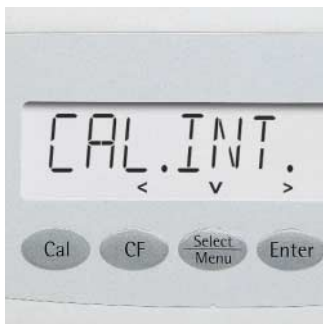
a simple, easy-to-understand control panel, key function assignments and the easy-to-read display are ideal for efficient weighing in your lab.



## The new Sartorius Extend Series

The difference is...  
the range of features

Add up all the features of the new Sartorius Extend series, and you'll find all the advantages that only a genuine Sartorius lab balance can offer; features that pay for themselves, time and again.

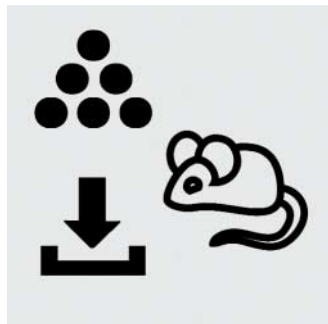


A built-in, motorized calibration weight is standard in all precision balances with the -CW suffix and in all analytical balances. This feature ensures maximum weighing accuracy and operating convenience.

The draft shield chamber on Extend series analytical balances provides optimal lighting conditions inside, thanks to its nearly frameless all-glass design.



An optional adapter cable enables you to connect a device, such as a computer, to the USB interface port. Plus, an RS-232C port is standard on all Extend balances.



Icons tell you at a glance which application you have selected, such as weigh averaging|dynamic animal weighing, net-total formulation or counting.

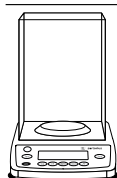


The hanger for below-balance weighing is easy to access.

Whenever you need ISO|GLP-compliant print-outs of raw data and|or calibration and adjustment data, the Sartorius Extend balance will generate them – at the touch of a key when connected to a data printer, the YDP03-OCE.

# Specifications

## Analytical balances



Model	Readability (g)	Weighing capacity (g)	Pan size (mm)	Repeatability (g)	Linearity (g)	Response time (avg., sec.)	Calibration
ED224S	0.0001	220	Ø90	0.0001	0.0002	2.5	Internal
ED124S	0.0001	120	Ø90	0.0001	0.0002	2.5	Internal

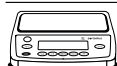
## Precision balances and scales



Model	Readability (g)	Weighing capacity (g)	Pan size (mm)	Repeatability (g)	Linearity (g)	Response time (avg., sec.)	Calibration
ED153	0.001	150	Ø115	0.001	0.002	1.3	External
ED153-CW	0.001	150	Ø115	0.001	0.002	1.3	Internal
ED323S	0.001	320	Ø115	0.001	0.002	1	External
ED323S-CW	0.001	320	Ø115	0.001	0.002	1	Internal
ED423S	0.001	420	Ø115	0.001	0.002	1	External
ED423S-CW	0.001	420	Ø115	0.001	0.002	1	Internal
ED623S	0.001	620	Ø115	0.001	0.002	1	External
ED623S-CW	0.001	620	Ø115	0.001	0.002	1	Internal



ED822	0.01	820	Ø150	0.01	0.02	1	External
ED822-CW	0.01	820	Ø150	0.01	0.02	1	Internal



ED2202S	0.01	2,200	180 × 180	0.01	0.02	1.1	External
ED2202S-CW	0.01	2,200	180 × 180	0.01	0.02	1.1	Internal
ED3202S	0.01	3,200	180 × 180	0.01	0.02	1.1	External
ED3202S-CW	0.01	3,200	180 × 180	0.01	0.02	1.1	Internal
ED4202S	0.01	4,200	180 × 180	0.01	0.02	1.1	External
ED4202S-CW	0.01	4,200	180 × 180	0.01	0.02	1.1	Internal
ED6202S	0.01	6,200	180 × 180	0.01	0.02	1.1	External
ED6202S-CW	0.01	6,200	180 × 180	0.01	0.02	1.1	Internal
ED2201	0.1	2,200	180 × 180	0.1	0.1	1	External
ED2201-CW	0.1	2,200	180 × 180	0.1	0.1	1	Internal
ED5201	0.1	5,200	180 × 180	0.1	0.1	1	External
ED5201-CW	0.1	5,200	180 × 180	0.1	0.1	1	Internal
ED8201	0.1	8,200	180 × 180	0.1	0.1	1	External
ED8201-CW	0.1	8,200	180 × 180	0.1	0.1	1	Internal

Accessories available on request.

Sartorius AG  
Weender Landstrasse 94-108  
37075 Goettingen, Germany

Phone +49.551.308.0  
Fax +49.551.308.3819

www.sartorius.com

Specifications subject to change without notice.  
Printed in Germany on paper that has been  
bleached without any use of chlorine.  
W/sart-232a - G  
Publication No.: WED1001-e05091  
Order No.: 98649-005-87