

Flow cell for wastewater applications with pH, redox/ORP and ion selective sensors. Sensor cleaning available as option.

Flow cell M-Flow 10-3PG

Flow cell made of PVC and acrylic glass with three PG 13.5 sensor screw connections. Suitable for Ø 12 mm sensors like pH, redox/ORP, ammonium, nitrate, reference and temperature.

Removable transparent vessel allows easy sensor calibration and maintenance.

Optional cleaning nozzle for sensor water spray cleaning.

Technical data

Connections

- Sample: Serto PA for 10 mm tube
- Cleaning water: Serto PA for 10 mm tube

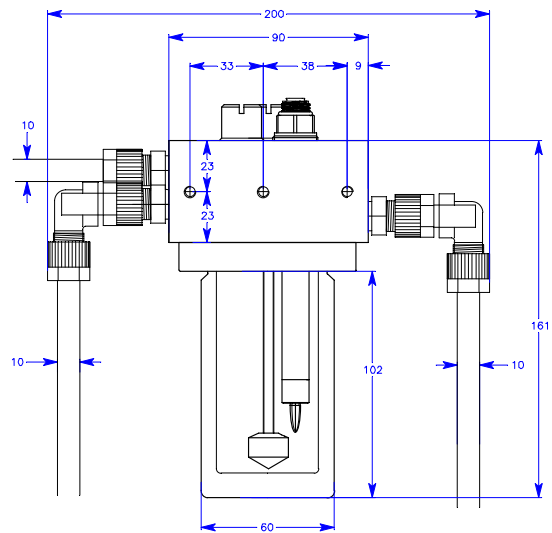
Sample conditions

(for the flow cell without sensors!)

- Flow rate: 4 to 15 l/h
- Temperature: up to 50 °C
- Inlet pressure: up to 1 bar @ 25 °C
- Pressure-free outlet (atmospheric drain)
- Cleaning water pressure: approx. 3-4 bar
- Particle size: below 0.5 mm
- No strong acids and bases
- No organic solvents

Dimensions

- Width: 90 ... 200 mm
- Front-to-back: 138 mm
- Height: 161 mm
- Panel mounting: 3 screws M5



M-Flow 10-3PG with sensor cleaning option

Delivery includes:

Flow cell M-Flow 10-3PG with two blind plugs PG 13.5 and with straight and 90° Serto connectors for sample in- and outlet. Set of mounting screws.

Order scheme	M-Flow 10-3PG	A - 83.41	X.	610
Cleaning option	None		6	
	With spray nozzle for sensor cleaning		7	

Option: A-89.410.110 Mounting panel for flow cell made of white PVC. Dimensions (w x h x d): 280 x 200 x 10 mm.