



Distributed By:
Camlab Limited

Camlab House, Norman Way Industrial Estate, Over, Cambridge CB24 5WE, UK

E: sales@camlab.co.uk

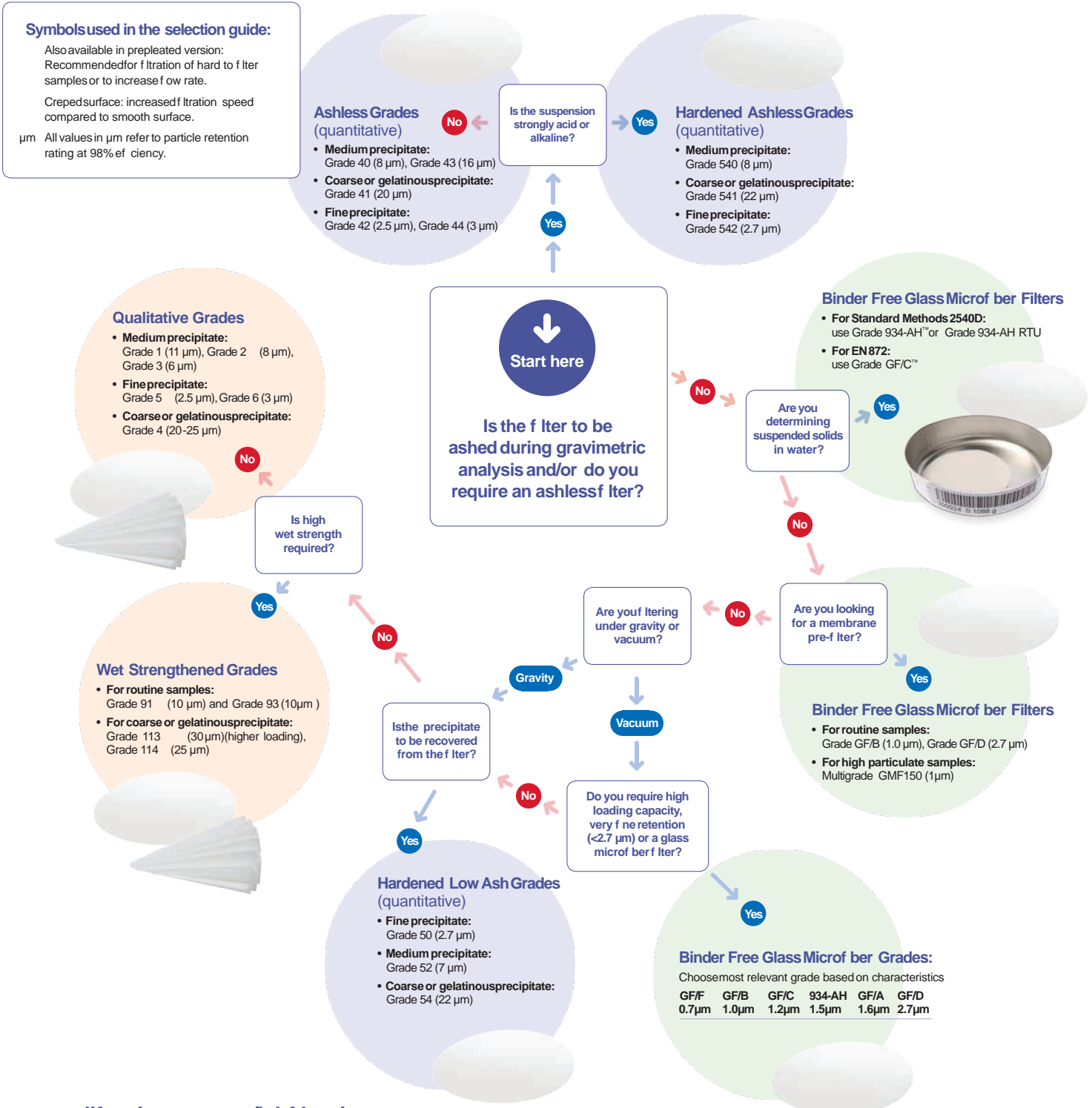
T: +44 1954 233110



Guide to laboratory filtration:

Cellulose and glass fiber filters for general laboratory filtration

Select the optimal Whatman™ filter for your application



www.gelifesciences.com/labfiltration

GE and GE monogram are trademarks of General Electric Company. 934-AH, Anotop, Whatman GD/X, GF/C, Mini-Uni-Prep, ReZist, SPARTAN, Whatman are trademarks of General Electric Company or one of its subsidiaries. © 2014 General Electric Company – All rights reserved. First published in June 2014.

GE Healthcare UK Limited, Amersham Place, Little Chalfont, Buckinghamshire, HP7 9NA, UK www.gelifesciences.com

29-1132-15 AA 06/2014



Guide to laboratory filtration:

Filtration devices for small volume sample preparation

Select the optimal Whatman™ filter for your application

- Step 1: Choose application
Step 2: Choose appropriate filter

Puradisc Aqua 30

12 13



Puradisc FP

3 4 9
11 14

*Notes:
3 and 9: CA



ReZist™

1 4 7 14



Applications

1. Air venting
2. Automated filtration of samples/
Tablet dissolution testing
3. Biological sample preparation
4. Capillary electrophoresis
5. Difficult to filter samples
(high solid content samples)
6. Filtration of colloidal material
7. HPLC/UHPLC sample preparation
8. Ion-chromatography
9. Filtration of protein containing samples
10. Filtration of nano particles
11. Sterile filtration (use sterile filter
and membrane with pore size 0.2 µm)
12. COD/TOC/DOC
13. Trace metal analysis (ICP/AAS/ICP-MS)
14. UV/VIS analysis

COD= Chemical oxygen demand;
TOC= Total organic carbon;
DOC= Dissolved organic carbon
Note: For guidance only. Only a selection
of applications shown above



Anotop™

3 4 6 7 8
9 10 11 14

*Notes: 0.02 µm



Anotop Plus

4 5 7 10

*Notes: 0.02 µm

Puradisc

3 4 7 9
11 2 3 14

*Notes:
3 & 9: CA, PES, PVDF
12 & 13: PES



Mini-UniPrep™ G2

2 7



Mini-UniPrep

2 7



Roby

2



SPARTAN™

4 7 9 14



GD/X

4 5
7 11 14



GD/XP

4 5 7 8
12 13 14



www.gelifesciences.com/labfiltration