

Choice, Service & Trust



camlab

www.camlab.co.uk



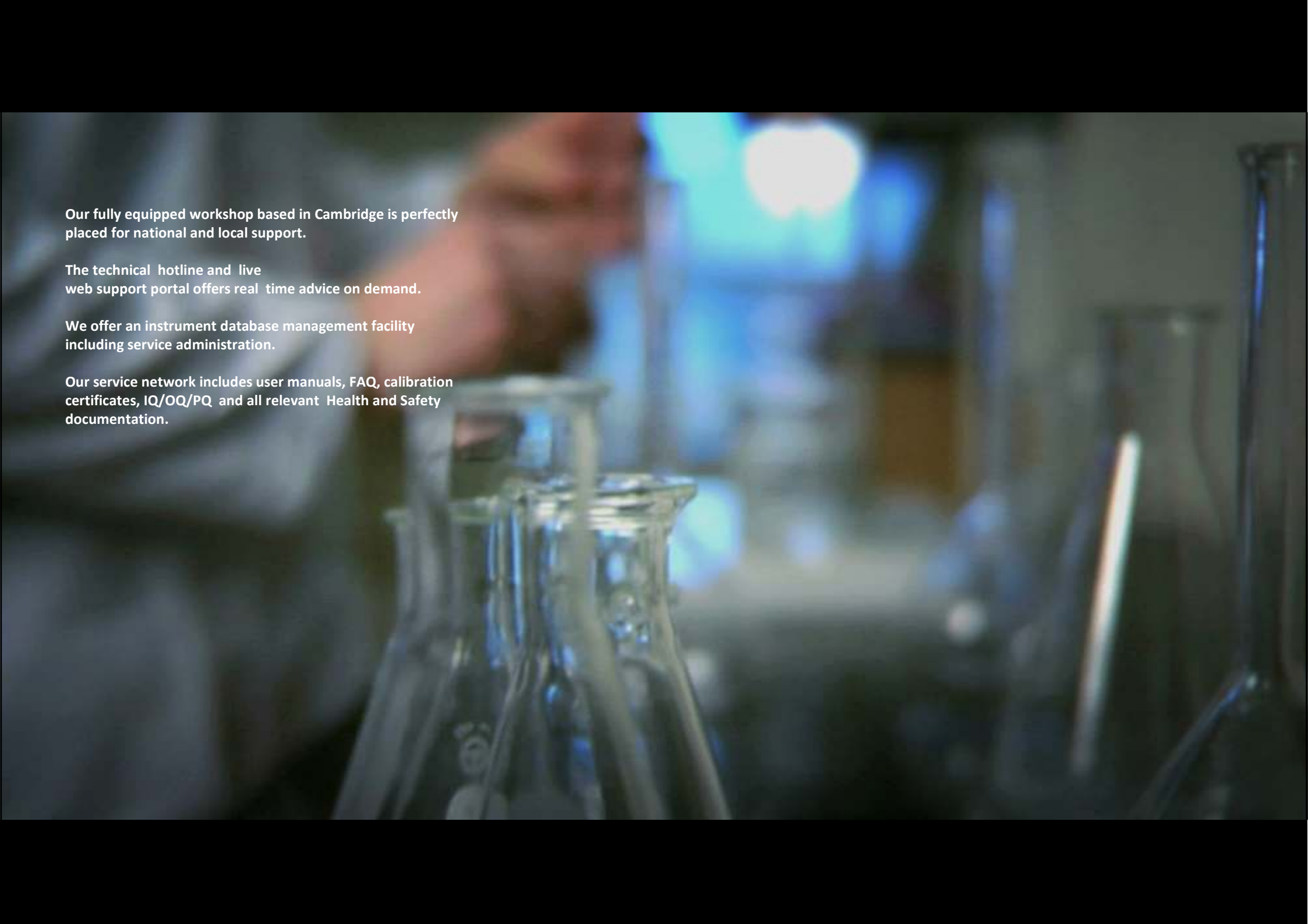
Camlab Ltd is an independent employee benefit trust company.
Formed in 1950.

All employees own a stake in the company and over 50% have a
scientific qualification with real laboratory or engineering
experience.

Our aim is to provide both professional advice and the best
possible service at all times.

A blurred image of a tunnel with a train passing through it, used as a background for text. The train is moving from left to right, and the tunnel walls and ceiling are lined with lights. The text is overlaid on the right side of the image.

on-site
engineering support
& instrument repairs

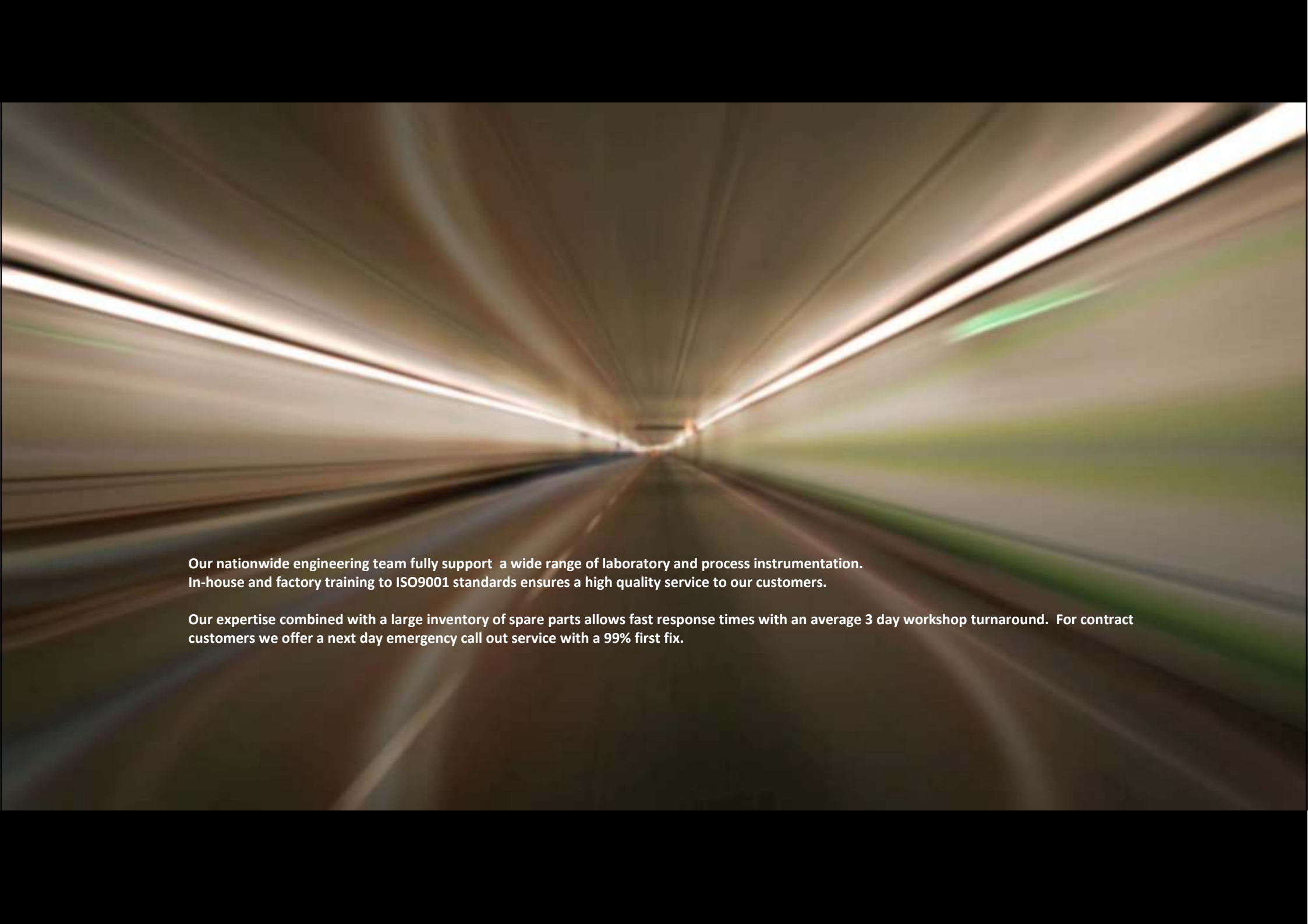
A blurred laboratory scene with a person in the background and glassware in the foreground. The person is wearing a white lab coat and is looking down. The foreground shows several glass flasks and beakers. The background is out of focus, showing a computer monitor and other laboratory equipment. The lighting is dim, with some blue and white highlights.

Our fully equipped workshop based in Cambridge is perfectly placed for national and local support.

The technical hotline and live web support portal offers real time advice on demand.


We offer an instrument database management facility including service administration.

Our service network includes user manuals, FAQ, calibration certificates, IQ/OQ/PQ and all relevant Health and Safety documentation.



Our nationwide engineering team fully support a wide range of laboratory and process instrumentation. In-house and factory training to ISO9001 standards ensures a high quality service to our customers.

Our expertise combined with a large inventory of spare parts allows fast response times with an average 3 day workshop turnaround. For contract customers we offer a next day emergency call out service with a 99% first fix.



Investments in the latest logistics and service software combined with our advanced on-line technology, allow us to provide an integrated equipment management service.

A complete service history is provided allowing asset management, life time costing, seamless tracking and traceability of equipment repairs.

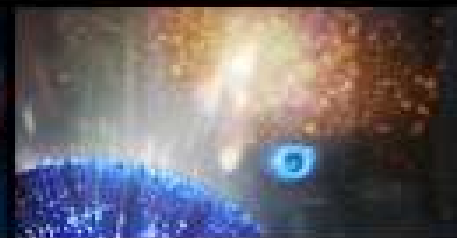
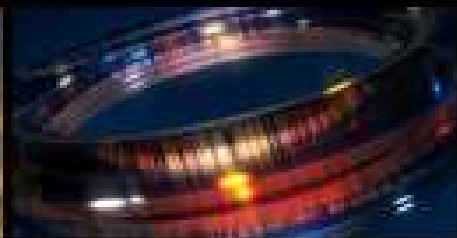
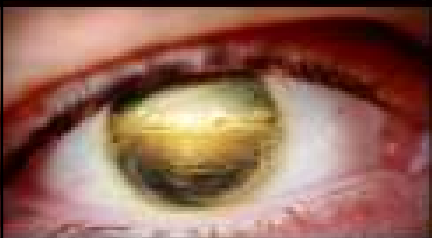


Camlab is committed to protecting the environment. Our current maintenance program includes recycling of equipment, circuit boards, batteries, toner cartridges, paper, plastic, and cardboard.

All staff are engaged in a program to help reduce our carbon footprint and that of our customers by adopting energy efficient initiatives.

Making Camlab your service partner is a positive commitment to a local company who cares about it's customers, employees and the world at large.





For further information
contact us on:

Tel: 01954 233103
Fax: 01954 233101
service@camlab.co.uk

www.camlab.co.uk