

# Routine Control made easy



With the EBI 100 data loggers, ebro offers reliable measurement devices for routine control of steam sterilizers, washer-disinfectors and washer-disinfectors for endoscopes according to German guidelines and ISO 15883.

The data loggers are available in different versions including temperature or temperature / pressure loggers with and without external probes. They record the temperature and pressure variation over time during the washer-disinfector or sterilizer process and can easily be read out on a computer with the help of Winlog.med software. This software will make the test evaluation easy, and automatically calculates the  $A_0$  value.

## Starter sets

### EBI 100

With the EBI 100 starter sets you can start your routine control process immediately according to the German guideline.

**In addition:** Extend your sets with an EBI 16 data logger, and you will be able to perform daily electronic Bowie Dick Tests.

#### SL 1010 (Part No. 1340-6570)

For temperature monitoring and  $A_0$  value calculation in bed pan washers.

The set contains:

- **EBI 100-T100** temperature data logger
- pH tester
- Conductivity tester
- Software and interface
- Aluminium carrying case



#### SL 1110 (Part No. 1340-6571)

For temperature and pressure monitoring as well as for  $A_0$  value calculation in washer-disinfectors, washer-disinfectors for endoscopes and steam sterilizers.

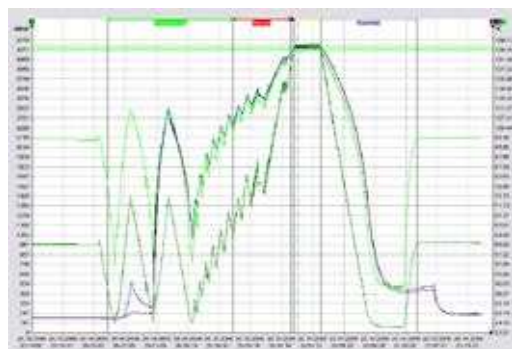
The set contains:

- **EBI 100-TP231** pressure / temperature data logger with Luer-Lock connection
- pH tester
- Conductivity tester
- Silicone protection box for logger
- Software and interface
- Aluminium carrying case



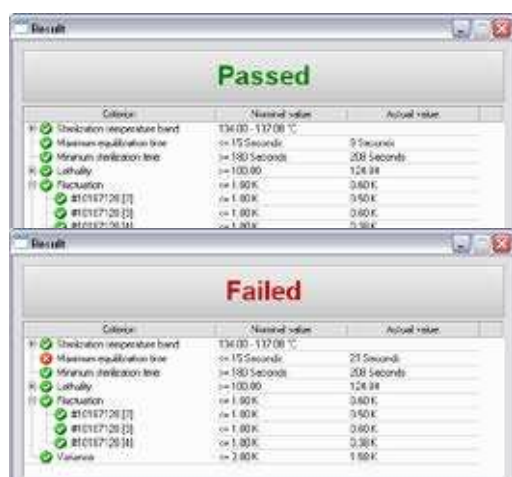


## Easy data read-out with Winlog.med software



During the routine monitoring of washer-disinfectors, washer-disinfectors for endoscopes and steam sterilizers the pressure and temperature variation in time is documented with the help of the data loggers.

During the evaluation, the software recognizes and checks all relevant phases of the sterilization. In addition, all of the required parameters are calculated and graphically displayed with the help of the software. Winlog.med software allows the simultaneous start or readout of multiple data loggers.



After the routine monitoring process is concluded, Winlog.med delivers a clear and error-free pass/fail evaluation. The evaluation is fully automated by Winlog.med, which facilitates the daily work of the user.

## Benefits

- Only one software is required: Winlog.med software can be used for the evaluation of EBI 100 data loggers as well as for the EBI 16 Bowie Dick Test.
- Only one interface is required, which can be applied for EBI 100 data loggers and for the EBI 16 Bowie Dick Test.

## System requirements

For the software to operate smoothly on your computer, your computer must meet the following requirements:

- Processor speed with at least 1 GHz
- At least 1 GB working storage
- At least 1 GB free hard disc storage
- USB 2.0 (Universal Serial BUS)
- Microsoft Windows XP®, Windows Vista or Windows 7®

