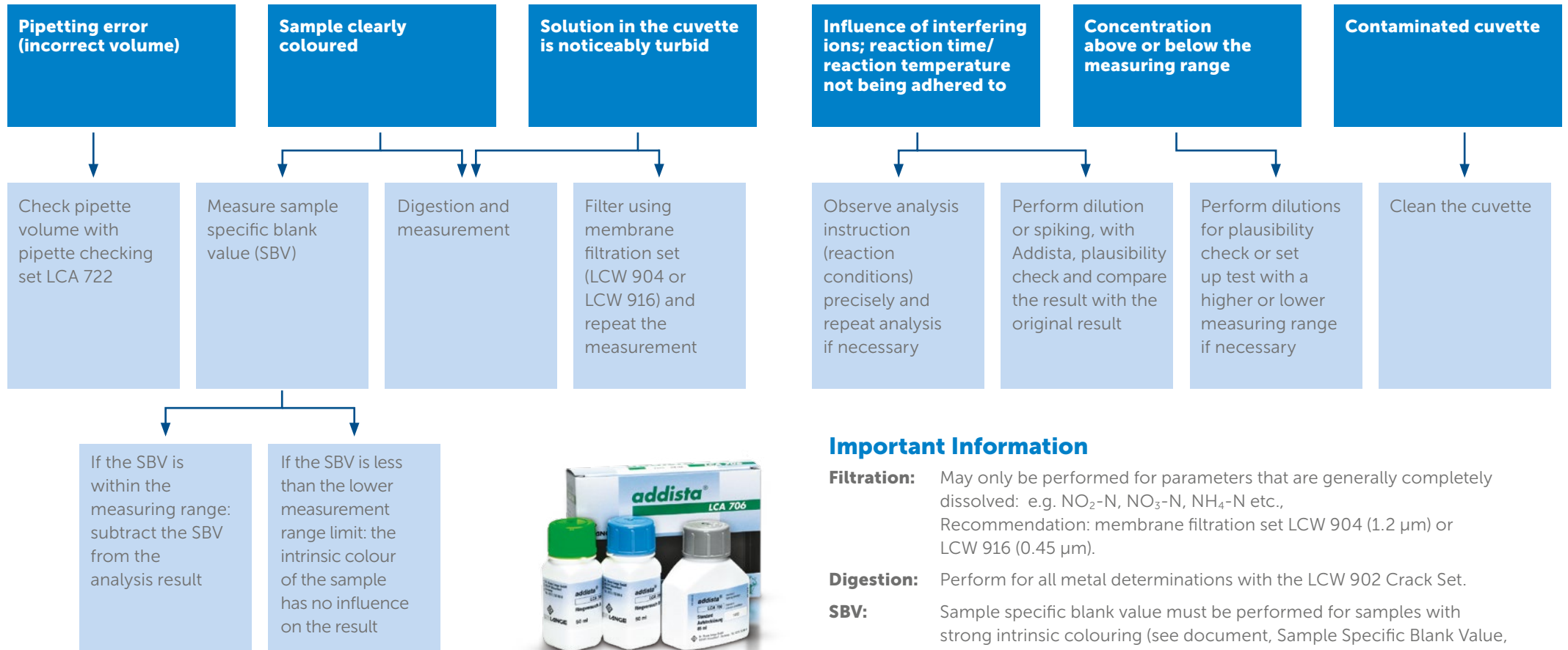


Error Sources During Analysis



Important Information

- Filtration:** May only be performed for parameters that are generally completely dissolved: e.g. NO₂-N, NO₃-N, NH₄-N etc., Recommendation: membrane filtration set LCW 904 (1.2 µm) or LCW 916 (0.45 µm).
- Digestion:** Perform for all metal determinations with the LCW 902 Crack Set.
- SBV:** Sample specific blank value must be performed for samples with strong intrinsic colouring (see document, Sample Specific Blank Value, DOC042.52.00280).

An important basic pre-requisite for high result reliability is regular checking of the **entire** analysis system: pipettes, photometer, reagents and general handling. This check is made considerably easier by the AQA system Addista.

www.hach.com

Distributed and Supported in the UK by:



24 Norman Way Industrial Estate, Over, Cambridge, CB24 5WE
 Tel: +44(0)1954 233 100 Fax: +44(0)1954 233 101
 Email: sales@camlab.co.uk Web: www.camlab.co.uk



Be Right™