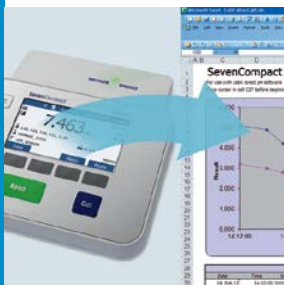


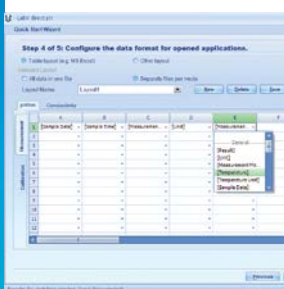
Easy Result Transfer to Your PC

LabX[®] direct pH



Transfer measurements and calibrations onto your PC

LabX direct pH transfers your measurement and calibration data automatically into Microsoft Excel or any other Windows based application on your PC.



Easily define your report format

LabX direct pH gives you the choice: For a quick start several Excel templates with corresponding layouts are available or you can easily create a customized Excel spreadsheet (or any other file format).



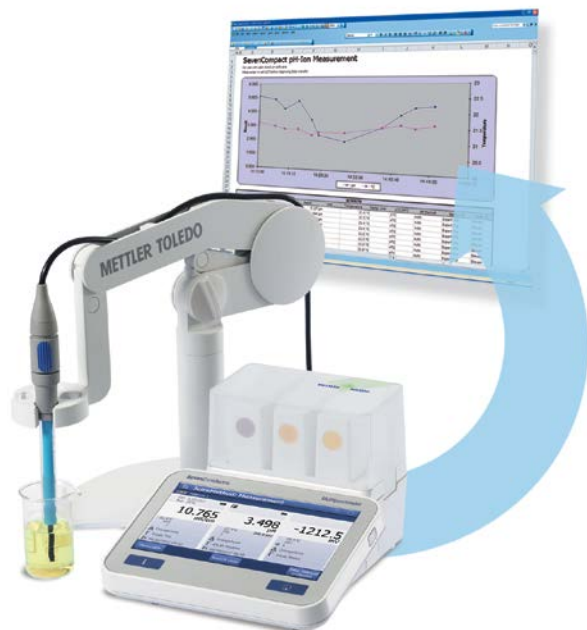
Read IDs with a barcode reader

LabX direct pH supports the connection of a barcode reader to help reduce errors and speed up your work. Easily capture sample IDs, lot numbers, etc. with a barcode reader and add the IDs to your measurement results.



Support for the whole Seven product family

LabX direct pH supports the entire Seven product family: SevenExcellence[™], SevenCompact[™], SevenMulti[™] (V.2.0), SevenEasy[™], SevenGo pro[™] and SevenGo Duo[™] pro.



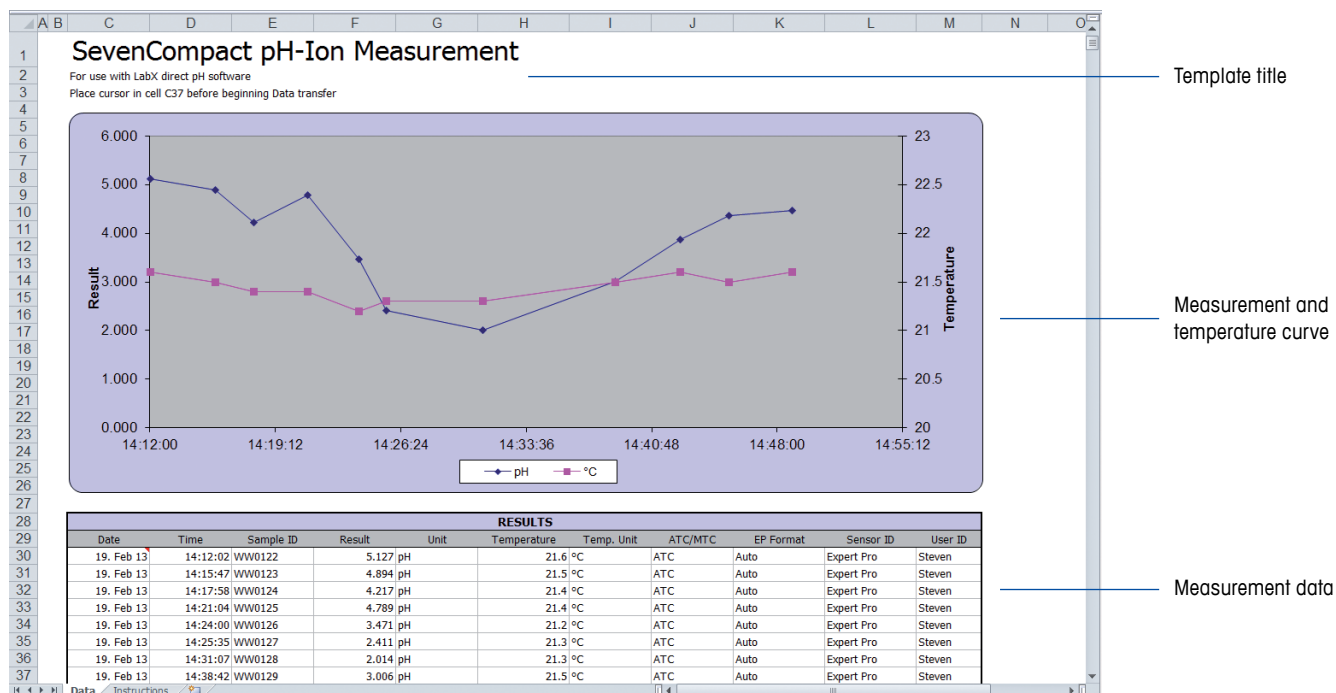
LabX[®] direct pH

Say goodbye to manual transcription, paper printouts or copy-pasting your data manually from one PC application to another. With LabX direct pH you benefit from flexible data transfer software to send data from your Seven instrument to an Excel spreadsheet or any other Windows based application on your PC. Additional information such as PC time and PC data can be added automatically to your results. With fast and easy installation and setup, you will be capturing your measurement and calibration results efficiently and reliably within minutes!

Exemplary overview of the data transferred to Excel

Example of data transfer and measurement curve

Ready-to-use Excel templates with corresponding default layouts are provided together with LabX direct pH (see illustration below). Select the desired Excel template, start a measurement or transfer data from the instrument's memory and LabX direct pH loads your measurement or calibration data easily and quickly to Excel. The measurement results are visualized as an on-line measurement curve. Each Excel template can be customized to your needs.



LabX® direct pH system requirements

Windows 7 / Vista / XP, CD ROM drive, one free USB or COM port.

Supported instruments: SevenExcellence™, SevenCompact™, SevenMulti™ (V.2.0), SevenEasy™, SevenGo pro™, SevenGo Duo pro™.

LabX direct pH automatically detects the country settings of your computer. The language of its user interface is adapted accordingly. The following languages are supported: English, German, French, Italian, Spanish, Japanese, Chinese, Russian, Korean and Portuguese. For unsupported languages the default setting is English.

Order information: LabX direct pH, part number 51302876



Mettler-Toledo AG, Analytical
 CH-8603 Schwerzenbach, Switzerland
 Tel. +41 22 567 53 22
 Fax +41 22 567 53 23

Subject to technical changes
 © 02/2013 Mettler-Toledo AG, 51724494B
 Marketing pH Lab / MarCom Analytical

www.mt.com

For more information