

Tubees[®], Micryro Plus[®] and StickOff[™] Label Size Guide

The guide below shows the actual size of each label from our range of labels. Labels are supplied in single roll dispenser packs unless otherwise indicated.



Stick - Off Labels



*Tube Lid Shape

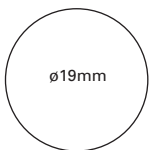
- 1158120 RTP/140
- 1158121 RTP/130
- 1158122 RTP/120
- 1158123 RTP/110
- 1158140 RTP/150



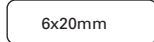
- C** 1146431 RTP/091
- 1146432 RTP/092
- 1146435 RTP/162
- 1146436 RTP/163
- 1146444 RTP/180
- S** 1158183 RTP/181
- R** 1169659 RTP/163TTCRY
- C** 1169662 RTP/202TTCRY
- R** 1169663 RTP/203TTCRY
- R** 1169668 RTP/163TTSR



- S** 1158179 RTP/179
- 1158185 RTP/182



- 1146437 RTP/164
- 1146438 RTP/165
- S** 1158153 RTP/166
- R** 1169660 RTP/165TTCRY



- 1158135 RTP/096
- 1158143 RTP/161
- R** 1169658 RTP/161TTCRY
- R** 1169660 RTP/165TTCRY
- R** 1169667 RTP/161TTSR



- S** 1158165 RTP/172
- S** 1158167 RTP/173



- 1158137 RTP/101
- S** 1158159 RTP/169
- S** 1158161 RTP/170
- 1158165 RTP/172
- 1158167 RTP/173
- R** 1169661 RTP/200TTCRY
- R** 1169669 RTP/200TTSR



- R** 1169666 RTP/160TTSR



- C** 1146431 RTP/091
- 1146433 RTP/093
- 1158134 RTP/095
- 1158136 RTP/100
- 1146434 RTP/160
- S** 1158155 RTP/167
- S** 1158157 RTP/168
- 1146439 RTP/174
- 1146440 RTP/175
- 1146441 RTP/176
- 1146442 RTP/177
- 1146443 RTP/178
- R** 1169662 RTP/202TTCRY



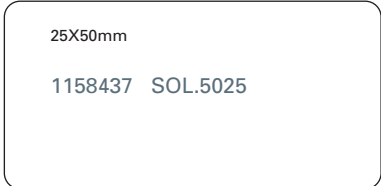
- 25X25mm
- 1158434 SOL.2525



- 26X38mm
- 1158435 SOL.3826



- 13X50mm
- 1158436 SOL.5013



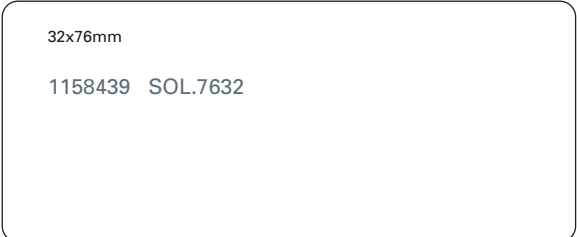
- 25X50mm
- 1158437 SOL.5025



- 38x50mm
- 1158438 SOL.5038



- 25x67mm
- S** 1158161 RTP/171
- R** 1169665 RTP/171TTCRY
- R** 1169670 RTP/171TTSR



- 32x76mm
- 1158439 SOL.7632

Label Type Key:

- Hazard** - Tubees[®]
- Cryogenic** - Micryro Plus[®]
- Dots & Strips** - Tubees[®]
- Hi-Lo Strips** - Tubees[®]
- Solvent Resistant** - Tubees[®]
- Stick-Off Labels**

R = Non dispensing reel for thermal transfer printers

S = A4 Sheets for laser printers

C = Combined dual reel dispenser of strips and dots

Custom Labels

Camlab labels are manufactured by us and can be produced in customised sizes, shapes and materials according to your requirements. Please note that pricing for this customised label service is quantity dependant. Please email plastics@camlab.co.uk for more details.



Printer Configuration

A comprehensive guide to sheet label page setup for Microsoft[®] Word[®] and Wordperfect[®] is available on request. Please call or email us for more details. You will also find a copy on our websites against the sheet label product codes above. see www.camlab.co.uk and www.camlabworld.com

