



Scout® Resource Guide

Portable Precision Balances

The Next Generation



Ingenuously Practical

20TH
ANNIVERSARY
OHAUS Scout®

Contents

The Next Generation

1. The First Generation

The OHAUS Port-O-Gram™, introduced in 1981, offered 200 g capacity and 0.1 g readability.

2. Scout®

Building on the Port-O-Gram's success, the OHAUS Scout was one pound lighter and featured a large high contrast display, additional weighing units, and a weigh-below hook.

3. Scout II

The redesigned Scout featured greater capacities and new communication capabilities with the introduction of RS232 interface models.

4. Scout Pro

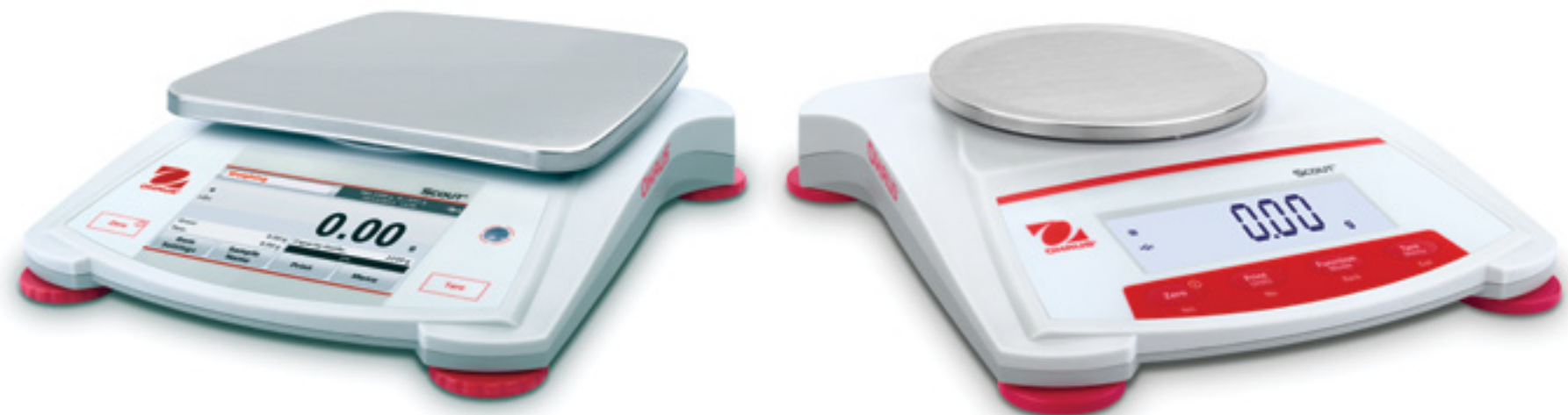
The Scout Pro featured even greater resolution, and an integrated weigh-below hook.

OHAUS—Leading the Portable Balance Market for 35 Years

Thirty five years ago, OHAUS created the portable precision balances market with the introduction of the Port-O-Gram™ balance. In 1996, we pushed the boundaries of portable weighing further with the introduction of the first Scout series of portable balances. Reliable, durable and precise—the Scout has solidified its position as a market leader and customer favorite over the past two decades.

The OHAUS Scout's flexibility to serve different markets and handle multiple applications makes it the popular choice of balance, from industrial to academic use.

Use this OHAUS Scout Resource Guide to see how you can continue to meet the weighing needs of your customers with the new Scout.



1.



2.



3.



4.

20TH
ANNIVERSARY

OHAUS Scout®

Scout® STX

Work Intuitively—No Manual Required

The First Touchscreen Portable Precision Balance!

Operating the Scout is so intuitive that your customers won't even need to read the manual. The Scout's informative color touchscreen display guides the user through every step of the processes involved in operating the balance.

On-screen buttons, settings, and application modes are all clearly labeled—no more confusing symbols or codes to remember! Entering important GLP and GMP data is easy with an on-screen, alpha-numeric keyboard.

The touchscreen won't interfere with how your customers work; they can wear their gloves while operating the touchscreen. Spills won't be a problem with the display's easy-to-clean sealed front panel. The dedicated mechanical keys can handle the stress of repetitive Tare, Zero, and Power On/Off functions.

Improve your customer's workflow with the intuitive operation of the OHAUS Scout STX.



1.



2.



3.



1. Quick and Efficient Navigation with the Informative Color Touchscreen Display

Large, resilient color touchscreen allows for effortless operation of the Scout through its informative icon driven menu structure, guiding the user through every step of the weighing application.

2. Fast Weighing Speed and High Resolution Deliver Repeatable and Reliable Results

Stabilization time as fast as 1 second means increased productivity in your facility. Equipped with advanced weighing technology, the Scout also ensures repeatable and reliable weighing results.

3. Superior Overload Protection & Stackable Storage Drive Overall Durability

Integrated superior overload protection system rated at 10 times the capacity protects the balance in rugged and demanding environments. The space-saving, slim design allows for stackable storage.



Scout® SKX

The Next Generation of Portable Balances

Setting New Standards!

The new OHAUS Scout is designed with a large backlit LCD and includes Density Determination and Mole Weighing software. It is built to endure demanding applications with superior overload protection. Features including, faster stabilization

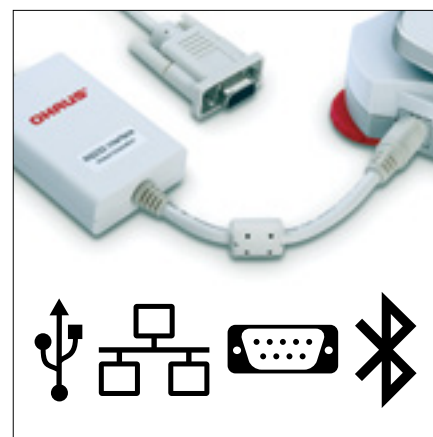
time, increased capacity, multiple connectivity options and stackable design make Scout the best weighing experience for the next generation laboratory and classroom.



1.



2.



3.



1. Superior Overload Protection & Practical Stackable Design for Convenient Storage

Integrated superior overload protection system rated at 10 times capacity protects the balance in demanding classroom environments. Space-saving design allows for stackable storage (excluding 1mg model).

2. Improved Functionality with Bright Backlit LCD and 4 Button Operation

Combined with a simplified 4 button operation, the Scout's large backlit display increases readability in dim lighting conditions, and makes it easier to view results from across a desk or lab bench.

3. Multiple Connectivity Options Available for Data Logging and Communication

With expanded connectivity options including RS232, USB Host, USB Device, Ethernet and Bluetooth®, the Scout provides added versatility to your data collection and transfer needs.



OHAUS Europe GmbH

OHAUS manufactures an extensive line of high-precision electronic and mechanical balances and scales that meet the demands of virtually any weighing need. The company is a global leader in the laboratory, industrial, and education channels as well as a host of specialty markets, including the food preparation, pharmacy and jewelry industries. OHAUS products are precise, reliable and affordable, and are backed by industry-leading customer support.

Ask for OHAUS from:

OHAUS Europe GmbH
Im Langacher 44
8606 Greifensee
Switzerland

e-mail: ssc@ohaus.com
Tel: 0041 22 567 53 19
e-mail: tsc@ohaus.com
Tel: 0041 22 567 53 20

www.ohaus.com

*OHAUS Corporation is an ISO
9001:2008 manufacturer*

ISO 9001:2008
Registered Quality
Management System

EU Literature CH16C017
80774977 © Copyright OHAUS Corporation

Ingeniously Practical

20TH
ANNIVERSARY
OHAUS Scout®