

Digital Water Baths

Digital, Specialty, and High Temperature Baths



SHEL LAB Performance & Reliability Meets World Class Style

Constant thinking.



Laboratory Water Bath

Digital Water Baths: W2M | W6M | W14M | W20M | W6/14M

- Drip Free Cover Holder
- Easy-to-Clean Stainless Steel Tank
- Pocket Handles for Easy Lifting
- Recessed Heating Element Prevents “Burnout”
- Air-Jacket Design Eliminates Hot Spots

SHEL LAB DIGITAL WATER BATHS ARE DURABLE AND DEPENDABLE. FIVE DIFFERENT MODELS ARE AVAILABLE, EACH WITH A VARIETY OF SAFETY AND CONVENIENCE FEATURES.

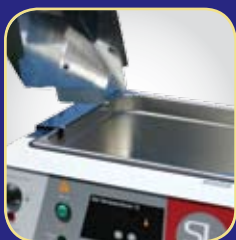


Digital Water Bath W14M

The SHEL LAB high-performance water baths are accurate, easy to use, safe and durable. The water bath design incorporates the attractive SHEL LAB appearance, a drip free cover holster, and pocket handles so users can easily move the water bath’s location. A microprocessor achieves precise temperature control regardless of how the unit is loaded. Calibration is performed directly from the front panel.

Model Number	W2M W2M-2*	W6M W6M-2*	W14M W14M-2*	W20M W20M-2*	W6/14M W6/14M-2*
Exterior Dimensions (wxdxh)	14.75 x 12.25 x 8.5 in. 37.46 x 31 x 22 cm.	14.75 x 12.2 x 12 in. 37.46 x 31 x 30.7 cm.	14.75 x 19 x 12 in. 37.46 x 48.26 x 30.7 cm.	14.75 x 25 x 12 in. 37.46 x 63.5 x 30.4 cm.	24 x 18.5 x 8.5 in. 61 x 47 x 21.6 cm.
Interior Dimensions (wxdxh)	11.6 x 5.9 x 2.4 in. 29.5 x 14.9 x 6 cm.	11.6 x 5.9 x 5.7 in. 29.4 x 15 x 14.5 cm.	12 x 13 x 6 in. 30.5 x 33 x 15.25 cm.	11.5 x 19.5 x 6 in. 29.2 x 49.5 x 15.25 cm.	14 L Tank: 11.9 x 12.9 x 5.5 in. 30.2 x 32.7 x 14 cm. 6 L Tank: 5.9 x 11.9 x 5.5 in. 14.9 x 30.2 x 14 cm.
Tank Capacity	2 Liters	6 Liters	14 Liters	20 Liters	6 liter and 14 liter
Temperature Range	Ambient +5 to 80°C	Ambient +5 to 80°C	Ambient +5 to 80°C	Ambient +5 to 80°C	Ambient +5 to 80°C
Temperature Control	Microprocessor	Microprocessor	Microprocessor	Microprocessor	Microprocessor
Temperature Uniformity	+/-0.2°C at 37°C	+/-0.2° at 37°C	+/-0.2° at 37°C	+/-0.2° at 37°C	+/-0.2° at 37°C
Electrical Requirements Watts/Amps/Cycle Phase-120V Watts/Amps/Cycle Phase-220V	300W / 3.0A / 50/60Hz 300W / 1.5A / 50/60Hz	300W / 3.0A / 50/60Hz 300W / 1.5A / 50/60Hz	500W / 5.0A / 50/60Hz 500W / 2.5A / 50/60Hz	500W / 5.0A / 50/60Hz 500W / 2.5A / 50/60Hz	500W / 5.0A / 50/60Hz 500W / 2.5A / 50/60Hz

*-2 indicates 220V. Specifications are subject to change without notice. For the most accurate and latest information please visit www.shellab.com.



Unique cover directs condensation to run into the tank



Pocket handles make baths easy to transfer.



Model W6/14M offers the versatility of dual tank configuration.

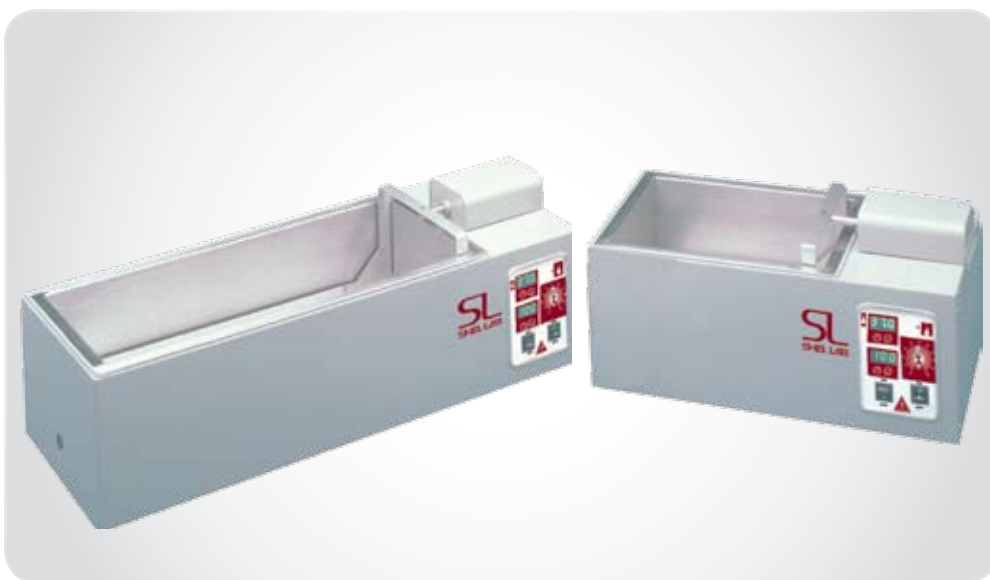
Laboratory Water Bath

Reciprocating Water Baths: WS17 | WS27

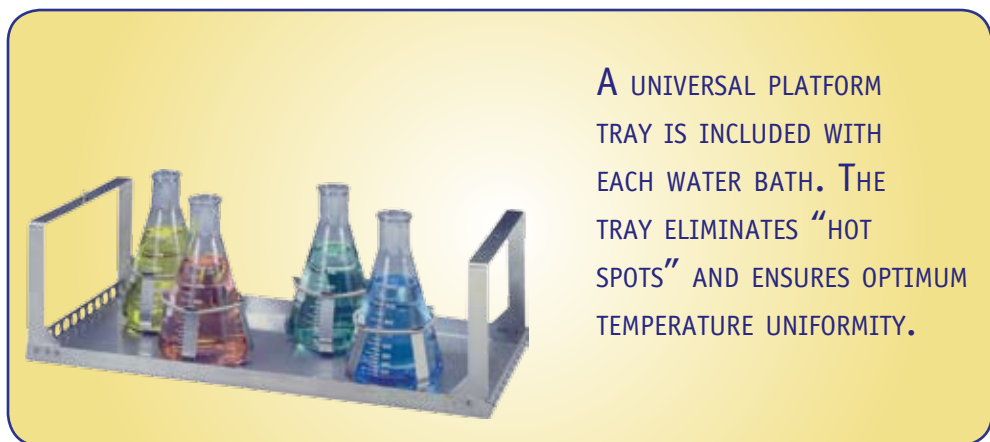
- **Microprocessor Controls**
- **Independent Oscillation and Temperature Controls**
- **Adjustable Stroke Length for Robust or Mild Agitation Capabilities**

The Reciprocating Water Baths deliver precise temperature control and a smooth, reciprocal shaking motion. The independent over-temperature safety offers backup protection should the main controller fail. Easy-to-read LED's display temperature and oscillation speed. An independent oscillator control allows the bath to also be used for regular constant temperature water bath applications.

The stroke length can be easily adjusted to three separate settings. This allows for various agitation speeds, ranging from mild to vigorous. The unique basket support system helps eliminate tank wear while fully supporting free action of a heavily loaded basket.



Shaking Water Bath WS27 and WS17



A UNIVERSAL PLATFORM TRAY IS INCLUDED WITH EACH WATER BATH. THE TRAY ELIMINATES “HOT SPOTS” AND ENSURES OPTIMUM TEMPERATURE UNIFORMITY.

Model Number	WS17 WS17-2*	WS27 WS27-2*
Exterior Dimensions (wxdxh)	14.3 x 24.7 x 12.5 in. 36.3 x 62.7 x 31.75 cm.	14.3 x 36.9 x 12.5 in. 36.3 x 93.72 x 31.75 cm.
Interior Dimensions (wxdxh)	12 x 14.7 x 7.5 in. 30.5 x 45 x 19 cm.	12 x 27.2 x 7.5 in. 30.5 x 70 x 19 cm.
Tank Capacity	16 Liters	27 Liters
Temperature Range	Ambient +5 to 80°C	Ambient +5 to 80°C
Control Resolution	0.1°C	0.1°C
Temperature Uniformity	+/- 0.2°C at 37°C	+/- 0.2°C at 37°C
Shaking Motion	Reciprocating	Reciprocating
Oscillation Rate	20 to 200 RPM	20 to 200 RPM
Stroke Length	Adj. 0.5/1.0/1.5 in.	Adj. 0.5/1.0/1.5 in.
Electrical Requirements		
Watts/Amps/Cycle Phase-120V	300W / 3.0A / 50/60Hz	500W / 5.0A / 50/60Hz
Watts/Amps/Cycle Phase-220V	300W / 1.5A / 50/60Hz	500W / 2.5A / 50/60Hz

*-2 indicates 220V.

Number of flasks each model can accommodate

Flask Size	WS17 WS17-2*	WS27 WS27-2*
25ml	24	48
50ml	24	48
125ml	24	48
250ml	12	24
500ml	6	12
1 liter	4	8
2 liter	2	4
2.8 liter	1	3
4 liter	1	2
5 liter	1	2
6 liter	1	2

* Optional Erlenmeyer flask holders. Order separately.

Laboratory Water Bath

Specialty Water Baths: WPC65 | WPC85 | WPC95 | WHT6M | WHT14M | WHT20M

SHEL LAB special-application water baths boast the same features as our other high-performance models, including being highly accurate, easy-to-use, rugged, and safe. The specialty baths are:

WPC65- Digital Circulating Water Bath

SHEL LAB digital circulating water baths are an excellent choice for research and quality control applications.

WPC85-Fecal Coliform Incubation Circulating Bath

Our fecal coliform incubation circulating water bath meets APHA and EPA test specifications, and is designed especially for fecal coliform testing and other applications where circulation provides extra temperature control.

WPC95-Deep Chamber Water Bath

SHEL LAB deep chamber water bath is designed to accommodate large volumetric samples.

WHT6/14/20M- High Temperature Water Bath

High temperature baths are designed to reach temperatures beyond what our other laboratory baths can reach. These baths are primarily used in DNA extraction applications.

Specialty Water Baths

Circulating
High Temperature
Dual Chamber
Fecal Coliform



WPC95

High Temperature Bath WHT6M



FOR HIGH TEMPERATURE APPLICATIONS, LOOK TO SHEL LAB HIGH TEMPERATURE BOILING BATHS WHT6M, WHT14M, AND WHT20M. THESE BATHS ARE DESIGNED TO REACH 100°C.

Model Number	WPC65 WPC65-2*	WPC85 WPC85-2*	WPC95 WPC95-2*	WHT6M WHT6M-2*	WHT14M WHT14M-2*	WHT20M WHT20M-2*
Exterior Dimensions (wxdxh)	14 x 28.5 x 9.5 in. 35.5 x 72.4 x 24 cm.	16 x 24 x 15.5 in. 40.6 x 61 x 39.4 cm.	16 x 18.5 x 15.5 in. 40.6 x 47 x 39.4 cm.	16.5 x 14 x 13.5 in. 42 x 35.6 x 34.3 cm.	16.5 x 21.3 x 13.5 in. 42 x 54 x 34.3 cm.	16.5 x 27.6 x 13.5 in. 42 x 70 x 34.3 cm.
Interior Dimensions (wxdxh)	11.5 x 19.5 x 6 in. 29 x 49.5 x 15.3 cm.	12 x 14 x 11 in. 30.4 x 35.5 x 28 cm.	12 x 14 x 11 in. 30.4 x 35.5 x 28 cm.	11.8 x 6 x 6 in. 30 x 15.2 x 15.3 cm.	12 x 13 x 6 in. 30.5 x 33 x 15.3 cm.	12 x 19.5 x 6 in. 30.5 x 49.5 x 15.3 cm.
Tank Capacity	22 Liters	34 Liters	30 Liters	6 Liters	14 Liters	20 Liters
Temperature Range	Ambient +5 to 80°C	Ambient +5 to 80°C	Ambient +5 to 80°C	Ambient +5 to 100°C	Ambient +5 to 100°C	Ambient +5 to 100°C
Temperature Control	Microprocessor	Microprocessor	Microprocessor	Microprocessor	Microprocessor	Microprocessor
Temperature Uniformity	+/-0.2°C at 37°C	+/-0.2°C at 37°C	+/-0.2° at 37°C	+/-0.2° at 37°C	+/-0.2° at 37°C	+/-0.2° at 37°C
Electrical Requirements						
Watts/Amps/Cycle Phase-120V	500W / 6.0A / 50/60Hz	750W / 6.5A / 50/60Hz	750W / 7.0A / 50/60Hz	750W / 7.0A / 50/60Hz	750W / 7.0A / 50/60Hz	750W / 7.0A / 50/60Hz
Watts/Amps/Cycle Phase-220V	500W / 3.0A / 50/60Hz	750W / 3.5A / 50/60Hz	750W / 3.5A / 50/60Hz	750W / 3.5A / 50/60Hz	750W / 3.5A / 50/60Hz	750W / 3.5A / 50/60Hz

*-2 indicates 220V.

SHELDON MFG INC.

300 N. 26th Ave. Cornelius, OR 97113
1-800-322-4897 Phone 503-640-3000 Fax 503-640-1366

Visit our web site at www.shellab.com

CO₂ Incubators • Vacuum Ovens • Water Baths • Incubators • Ovens
Low Temperature Incubators • Humidity Test Chambers • Shaking Incubators
Bactron Anaerobic Chambers • Hybridization Ovens • Shaking Water Baths

Constant thinking.



A Product of
SHELDON MFG. INC.