

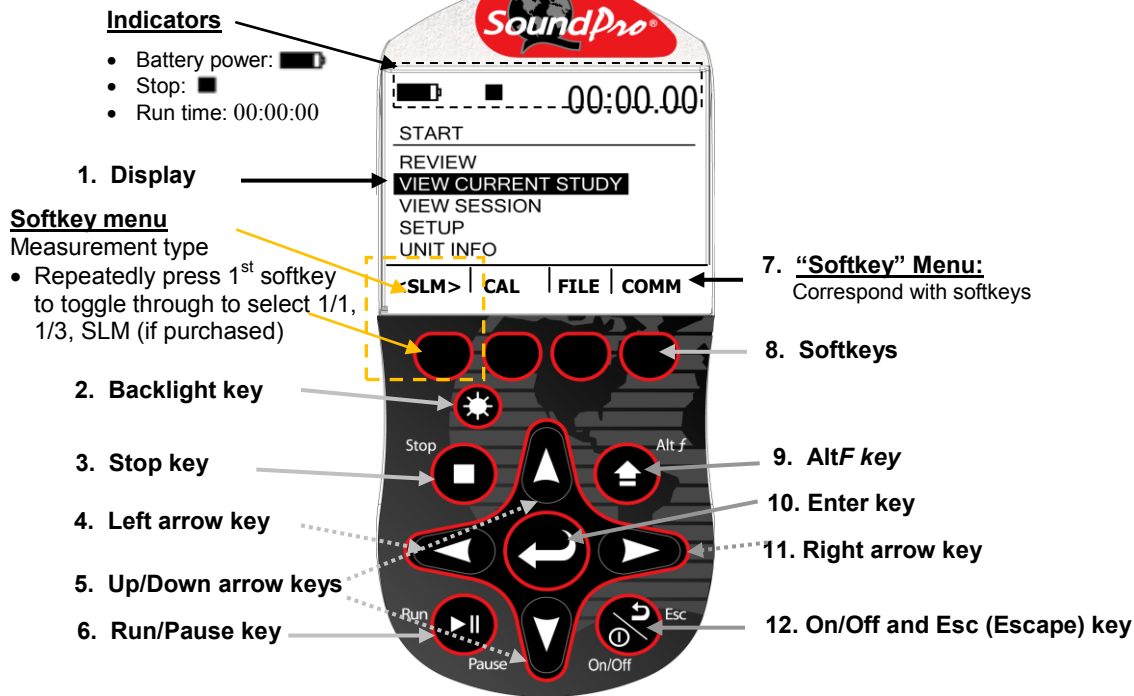


SoundPro Quick Start Guide



SoundPro Start-up Guide

SoundPro Display and User keypad



Turning On/Off and Navigating

- To turn on the SoundPro, press the key until the start screen appears.
- To navigate, press the up/down arrows and left/right arrows for most of the navigational functions.
 - The key is used to move back one level (or escape from a menu/screen). Press repeatedly to return to the start screen.
 - The key is used to open the selected menu/screen.



Resetting

- Format the card or delete the session files from the SoundPro (optional).
 - To format, select the File softkey from the start screen. Press the down arrow continuously to select Format. Press key.

Settings

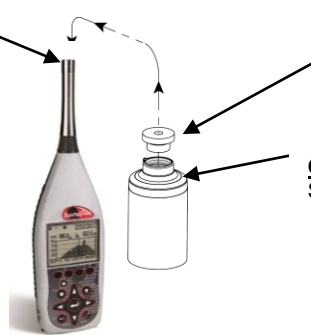
- Adjust the settings to fit the specifications of your sound study.
 - To open the Setup menu from the start screen, press the arrow keys and press key when selected. The setup menu will appear. To change the parameters, navigate to the appropriate menus and make changes as needed. (See the user manual for specific details and term explanations for more information.)

Calibrate the SoundPro (pre/post cals)

1. Ensure the SoundPro is turned On and is either stopped or paused.
2. Attach the calibrator and cal adapter to the SoundPro. Set the calibrator to 1 KHz and 114 dB (if it is a selectable).

Microphone

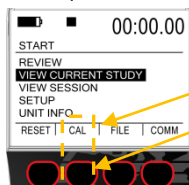
Place calibrator
over microphone



QC10/QC20

Select 1kHz and 114 dB

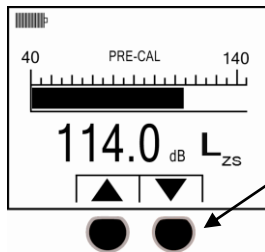
3. From the Start screen, press the **Cal** softkey and the Cal screen will open. Press when Calibrate is highlighted. The Pre-Cal screen will open.



Cal softkey

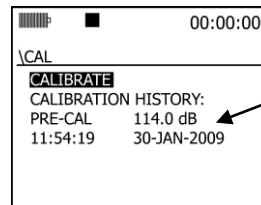
- Select softkey to open

4. Allow the measurement to stabilize and press **Arrows** to set 114.0 dB level (see A). Then, press key. When set, the Calibration history screen appears (see B).



A. Calibrate

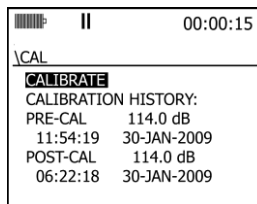
Press corresponding
softkey to 114.0 dB
level.



B. Pre-Cal

Displays pre-calibration
information

5. Press key to exit the Cal screen.
6. For a **Post Calibration**, ensure the SoundPro is in "Pause" mode. (Essentially, run a measurement and press the run/pause key.) The Pause indicator will appear at the top of the display.) Then repeat the Calibration steps above and press Enter to store the Post Calibration information. A sample screen is displayed below with post calibration history.

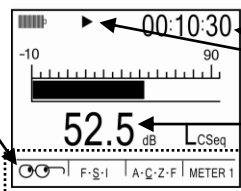


Run/Pause/Stop Measurements

Position the SoundPro in the field. Press the run key to start measuring. To pause a study (for example: lunch breaks), press the run/pause key. To start measuring again, press the run/pause key. Continue this process until your measurements are complete by press the Stop key. This will end the session.

1. From the **Start screen**, select either **View Session** or select **View Current Study** by press the arrows and key to select.
2. Press key to begin measuring. Press key to Pause (optional). At any time, press to end the session/study.

Lookup softkey:
Select to change
measurement
parameter (Lpk,
Lmx, Lmn,
Leq,Las)



RunTime

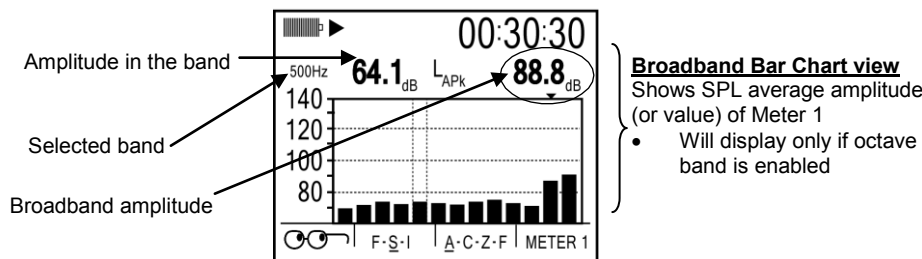
Run icon

Measurement value (Average SPL)

Measurements Displayed

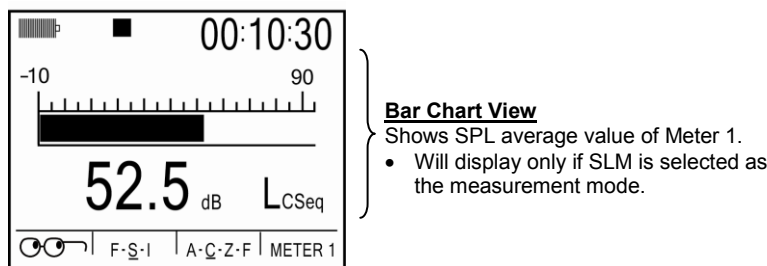
Filtered Bar Chart screen

For the filtered bar chart screen, the dominant characteristic of this screen is the multi-element bar chart. The chart displays measurements in each filter band and broadband values for both meters. For octave band analysis, the screen contains 13 bars (11 for filters and 2 for broadband), and for third-octave analysis the screen contains 35 bars (33 for filters and 2 for broadband) of measurement values. The bars appear (and usually fluctuate) if the measured value for the bar is above the minimum value for the selected measurement range.



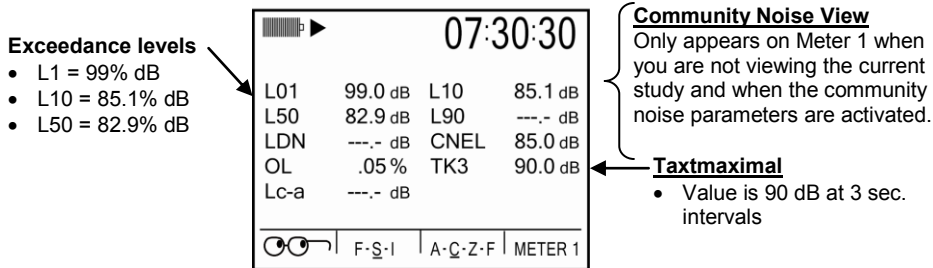
Bar Chart screen

For the **bar chart screen**, the amplitude of the displayed measurement is shown both graphically by the length of the bar and numerically below the bar. The bar appears (and usually fluctuates) if the measured value is above the minimum value for the selected measurement range.



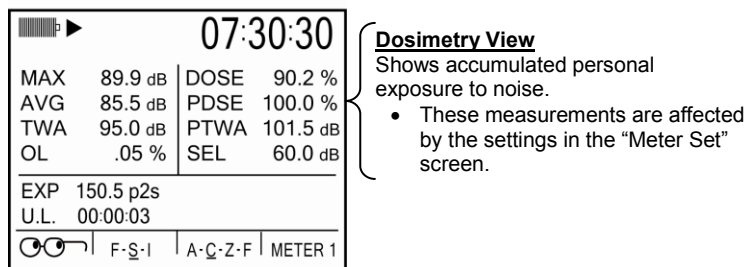
Community Noise screen

This screen shows the results of measurements commonly associated with community noise studies.



Dosimetry screen


The Dosimetry screen provides several types of measurements of the accumulated personal exposure to noise.



3MTM Detection Management Software DMS and working with SoundPro data

➤ Viewing data and Data Finder Page

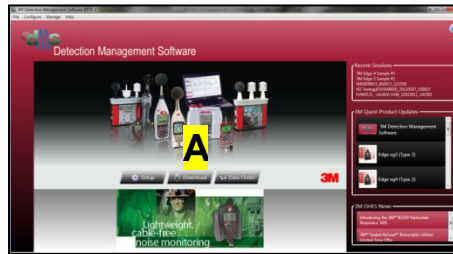
1. Communicating/connecting the SoundPro to the pc

- Turn On  the Sound Pro.
- Plug in USB cable from SoundPro to pc.

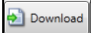


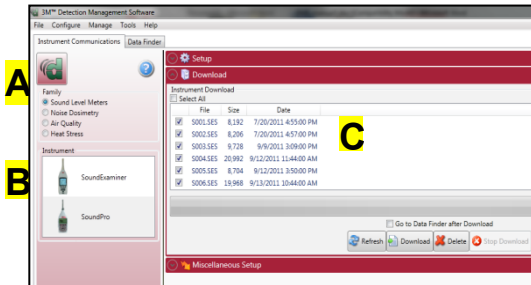
2. DMS Welcome page and instrument communication

- Click on  icon (see A) to access the Instrument download panel.

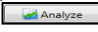



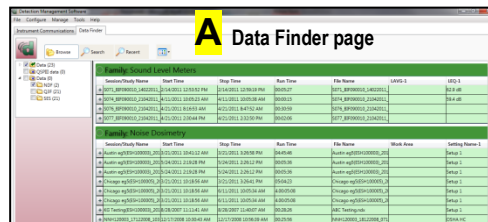
3. SoundPro and downloading

- Select the SLM family and the SoundPro mode from the Instrument window (see A). Click on "Go to session finder after download" box.
- Click the  button (See B).
- Once downloaded, click the Data Finder tab (if you did not select "go to session finder in step A".) (See C).




4. Selecting and viewing data

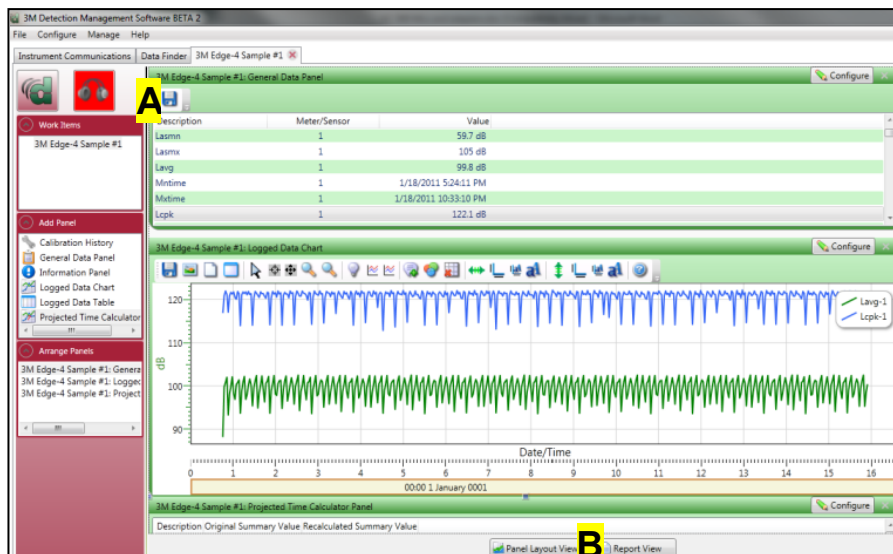
- The Data Finder page (see A) is used to view, select, and preview reports. Note: Click Browse to view all data files.
- Select the data by clicking on either the session/study (Note: you may need to expand to see the study data).
- To view in Graphs and Tables, click on  or  buttons.



5. Viewing Data in graphs & tables & Report View

The graphs and tables page is noted as the panel layout view page.

- The session/study data page displays the data in logged data charts/tables (see A).
- Click on  to view the panels in a report format (see B).



About Us

3M Detection Solutions is a world class manufacturer of rugged, reliable instrumentation and software systems that help monitor and evaluate occupational and environmental health and safety hazards, including noise dosimetry, sound level monitoring, heat stress, indoor air quality and select toxic/combustible gases. The 3M Detection brand of instrumentation is used by safety and industrial hygiene professionals to help comply with applicable occupational standards and regulations.

About 3M Personal Safety

3M offers a comprehensive, diverse portfolio of Personal Safety solutions providing respiratory protection, hearing protection, fall protection, reflective materials for high visibility, protective clothing, protective eyewear, head and face protection, welding helmets, and other adjacent products and solutions such as tactical safety equipment, detection, monitoring equipment, active communications equipment and compliance management. In 2012, 3M celebrated 40 years of safety leadership – recognizing the company's respiratory and hearing protection solutions introduced in 1972. Visit www.3M.com/PPESafety or <http://m.3m.com/PPESafety>



Personal Safety Division

3M Detection Solutions
ISO 9001 Registered Company
ISO 17025 Accredited Calibration Lab
1060 Corporate Center Drive
Oconomowoc, WI 53066
Customer Service: 262-567-9157
Toll Free: 800-245-0779

3M and SoundPro are trademarks of 3M Company, used under license in Canada.
Please recycle. Printed in USA.
© 2013 3M Company
All rights reserved.
053-776 Rev.A., 6/13