

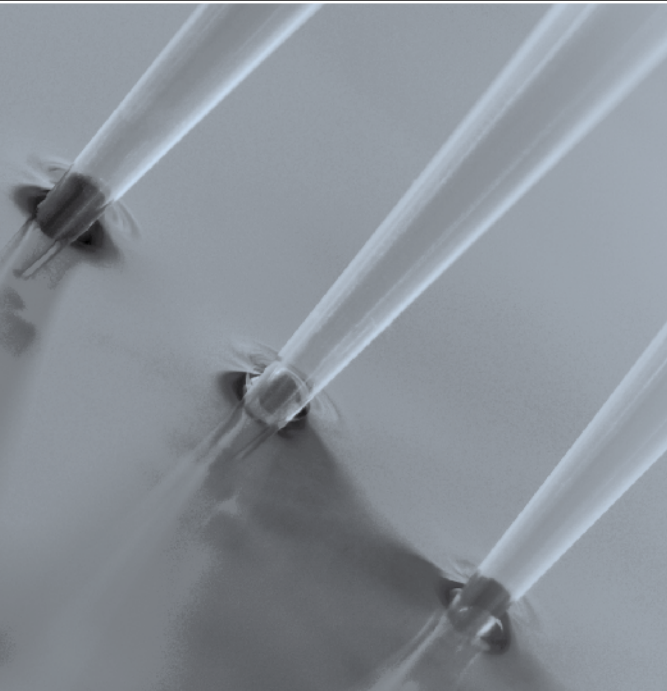
02

Thermo Scientific Finntip

New products

- Finntip Flex 10 and refill kits
- Finntip Flex 1200 refill kit
- Flex Filter tips
- Finntip Flex 10 ml Extended tips

Finntips are fully compatible with both old and new Finnpipettes, providing optimal liquid handling results. The new Finntip Flex system is the latest breakthrough in pipette technology that offers flexible, soft and sophisticated high-end tips. All Finntips and Finntip Flex tips are available in easy-to-open, fully autoclavable operation racks and space-saving refill kits.



Thermo Scientific Finntip Flex – A new peak in tip technology

Flexible in every way

The new Thermo Scientific Finntip Flex system is the latest breakthrough in pipette tip technology that offers flexible, soft and sophisticated high-end tips for discerning users. The Finntip Flex system consists of new generation, easy-to-use 10 µl, 300 µl, 1000 µl and 1200 µl tips, tip rack and space-saving refill kit. All elements in the system have been designed to fulfill the most demanding requirements for ergonomics and flexibility in pipetting tasks for today's fast-paced laboratories.

Tips reduce RSI* risk

With its special thin wall molding technology, the new Finntip Flex tip is designed to enhance pipetting ergonomics. This soft tip reduces the amount of force needed to attach and eject tips, significantly lowering the risk of RSI. It also ensures a better seal with the pipette module, ensuring higher accuracy and precision. Currently, the clear Finntip Flex tips are available in 300 µl, 1000 µl and 1200 µl, and come as standard racked tips, sterile tips or filter tips.

Non-slip rack

The all-new non-slip operating rack has been designed as a result of direct feedback from laboratory personnel around the world. The see-through cover is easy to open with one hand, leaving the other

hand free. Thanks to the new sturdy base and non-slip feet, the rack stays put, allowing you to easily yet firmly attach the tip. The rack's attractive new design is fresh and compact – a welcome addition to any lab.

Save space on refills

Refilling the operating rack has never been so easy. The refill system allows fast tip matrix plate attachment with just one click. The innovative refill system design now helps you save on space. Ten refill plates are stacked in a compact way to reduce material use, eliminate waste and keep the plates free from dust.

Extra smooth tip surface - New

All Flex tips are molded with a diamond polished tooling. The diamond polishing creates an extra smooth surface to the tip and improves the tip transparency. The smooth tip wall surface prevents liquid retention and enables to achieve better pipetting precision values compared to the non-polished tip. The increased precision is most beneficial with small volume pipetting where precision values can be improved by approximately 50%. When aspirating difficult liquids (e.g. BSA), the extra smooth surface diminishes the creation of bubbles.

When selecting a tip

- Choose high quality tip to avoid leakage and retention
- Choose a tip with perfect surfaces
- Choose a tip with flush orifices and reliable seals



Finntip Flex 10



Finntip Flex 300



Thermo Scientific Finntip Flex Tips

NEW Finntip Flex 10 - 0.1-10 µl

The Finntip Flex 10 tips is designed for ergonomic micro volume pipetting. The tip have extremely low attachment and ejection forces which make them excellent for Finnpi-pette single and Multichannels. The tip has an elongated slim-line shape for better reach to test tubes or long neck vessels. Finntip Flex 10 tips come in various packaging options and sizes, including vacuum sealed sterile racks and practical refill kits.

Finntip Flex 300 – 5-300 µl

The Finntip Flex 300 tips have low attachment and ejection forces which make them excellent for Finnpi-pette single and Multichannels. The tip has an elongated slim-line shape for pipetting with test tubes or long neck vessels using Finnpi-pette single channels. Finntip Flex 300 tips come in various packaging options and sizes, including vacuum sealed sterile racks and practical refill kits.

NEW Finntip Flex 1000 – 50-1000 µl

This mid-size tip has low attachment and ejection forces, and with its elongated slim lined shape to pipette with test tubes or long neck vessels, makes it excellent for use with Finnpi-pette single channels. These new tips come in various packaging options, and are available as standard and sterilized racked tips as well as refill kits.



Finntip Flex 1000



Finntip Flex 1200

Finntip Flex 1200 – 50-1200 µl

Flex 1200 tips are designed specially for the Finnpi-pette Novus 1200 multichannel pipette. The wider than normal tip orifice enables precise and accurate stepping results. Flex 1200 tips are available as standard and sterilized racks.

NEW Finntip Flex 10 Extended – 1-10 ml

The Finntip Flex 10 extended tip is 267 millimeters long, and is the longest reaching tip in the market. The tip is very narrow and has been designed to reach to the bottom of normal laboratory 1 liter reagent bottles, and fits into most volumetric flasks. The latest molding technique combined with the Finnpi-pette tip cone design enables very low attachment and ejection forces to avoid stress related injuries. The wider 2,2 millimeter orifice enables better accuracy and precision when stepping, and has graduations between 1 milliliters for quick volume check. Finntip Flex 10 extended tip is also available as a filter tip and as sterile to avoid contamination. Finntip Flex 10 ml extended is only available in bags to save labs space

Finntip Flex Refill Kits

The innovative Finntip Flex 300 and 1000 refill systems are very easy to use. Just place the refill tower on top of an empty Flex rack and with a single click the new tip matrix plate is placed. The following tip matrix in the tower slides automatically in place to be ready for next refill action. The tip matrix plates are secured from dust inside the refill tower case. Both the Finntip Flex 300 and 1000 refill kits contain two refill towers, and the number of matrix plates per tower for the Finntip Flex 300 is 10 and 8 for the Finntip Flex 1000. The compact size of the refill tower helps save lab space and helps to reduce lab waste since the existing Finntip Flex racks can be used.

Finntip Flex refill kits are available as Refill Starter kit which contains two refill towers and one rack and Refill kit which contains two refill towers.



Finntip Flex 1000 Refill



Thermo Scientific Finntip – Pipette Tips

Finntip 10 – 0.2-10 µl

This tip is specially designed for pipetting micro-sized drops. It is ideal for use with micro-volume Finnpipette Focus pipettes (0.3-3 µl, 0.5-5 µl and 1-10 µl single channels and the 1-10 µl multichannels) and Finnpipette Digitals (0.2-2 µl and 0.5-10 µl single channels and the 0.5-10 µl multichannel). Finntip 10 is now also available in refill kits.

Finntip 50 – 0.2-50 µl

Finntip 50 is designed for the Finnpipette 16-channel.

Finntip 250 Universal – 0.5-250 µl

Ideal for use with single channel and multichannel Finnpipettes, the Finntip 250 Universal is also designed for use with pipettes from other manufacturers. Finntip 250 Universal tips are available in refill kits.

Finntip 200 Ext – 5-200 µl

The Finntip 200 Ext is an extra-long tapered tip that is designed to fit in extremely narrow vessels.

Finntip 300 – 5-300 µl

These tips are specially designed for the Finnpipette multichannels

(reverse pipetting is possible with the 300 µl). The Finntip 300 is also suitable for single channel pipettes in the 5-300 µl range. Packaging options include refill packs.

Finntip 1000 Ext – 100-1000 µl

The new Finntip 1000 Ext is an extended 10.5 cm model of the Finntip 1000. It is ideal for use with longer tubes and other deep vessels.

Finntip 1000 – 100-1000 µl

This mid-size tip comes in several package sizes. It is also available in refill packs.



Finntip 10



Finntip 50



Finntip 250

- **Wide range of tips**
- **Enhanced pipetting performance**

Application areas of Finntips:

- **Aqueous solutions**
- **Enzyme samples**
- **Viscous solutions**
- **Chemical analyses**



Finntip 1000 Ext

Thermo Scientific Finntip – Pipette Tips

Finntip 5 ml – 0.5-5 ml

This high-volume tip is designed for use with large laboratory vessels. Several packaging options are available, including racks, boxes, bags and bulk.

Finntip 10 ml – 1-10 ml

The high-capacity Finntip 10 ml is ideal for use with extremely large and deep laboratory vessels. It is also available in sterile versions.

Autoclaving

Finntips can be autoclaved, except Finntip Filter and Finntip Stepper. Sterile versions of these tips are available.

Finntip Refill Starter Kit

This contains four racks of Finntips and one refill tower of 10 matrix plates. When the rack is empty, the empty matrix can be removed and a full matrix refill easily transferred from the tower to the rack. The racks can be re-used and therefore help to reduce waste, while the packaging for the refill kits is made of recyclable cardboard. Refill starter Kits are available for volume ranges of 250 µl and 10 µl.

Finntip Refill Kit

This contains two refill towers of 10 matrix plates each. Finntip 250 Universal can be used for a volume range of 0.5 – 250 µl whilst Finntip 10 can be used for 0.2 – 10 µl. Both are suitable for use with single and multi-channel pipettes. Finntips and racks can be autoclaved at 121°C for 20 minutes. Refill Kits are available for volumes ranges of 250 µl and 10 µl.



Finntip 200 Ext



Finntip 10 Refill Kit



Finntip 1000



Finntip 5 ml



Finntip 10 ml



Thermo Scientific Finntip – Pipette Tips Finntip Filters

Certified Filter Tips

The Finntip Filter range of pipette tips provides certified protection against contamination for both sample and pipette. The non-sealing filter prevents the transfer of aerosols from tip to pipette and vice versa, ensuring the integrity of any pipetting function. Produced in a controlled environment with gamma-irradiation, Finntip Filter pipette tips are certified free from DNA, DNase, RNase and Endotoxin. Finntip Filters are therefore ideal for all applications, especially sensitive procedures such as PCR-based reactions. With extremely low sample retention, the tips are also perfect for pipetting small volumes or valuable compounds.

NEW Finntip Flex Filter Tips

The new Thermo Scientific Finntip Flex Filter tip is the latest breakthrough in pipette tip technology that offers flexible, soft and sophisticated high-end tips for discerning users. With its special softer plastic material, the new Finntip Flex Filter

tip is designed to enhance pipetting ergonomics. This soft tip reduces the amount of force needed to attach and eject tips, significantly lowering the risk of RSI. It also ensures a better seal with the pipette module, ensuring higher accuracy and precision.

Finntip Flex Filter tips, as with all Finntips, are certified* to be free from DNA, DNase, RNase and Endotoxin, making them essential where cross contamination is a major concern and so ideal for use in research applications such as bio-molecular assays. Made of an inert non-sealing polyethylene matrix, the filter is effective at eliminating carry-over contamination from liquids and aerosols between pipette and tip, and permits sample recovery after accidental ingress without any loss

of integrity. Finntip Flex Filter tips are available in 10, 30, 100, 200, 300, 1000 and 1200 μ l volumes.

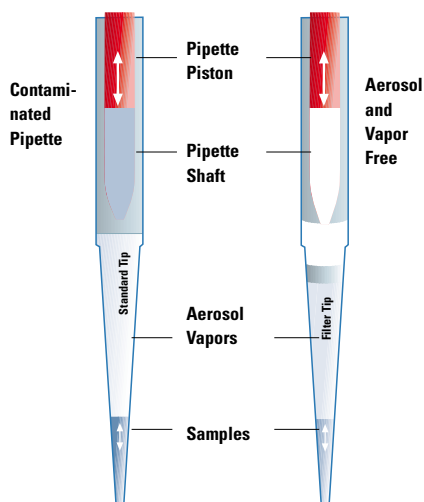
Finntip Filter 0.2 μ l-10 ml

Finntip Filters are ideal for PCR and other amplification methods or for any work where aerosol contamination might occur. They are designed for pipetting DNA/RNA solutions, infectious materials, labeled samples, and others. Finntip Filters cannot be autoclaved, and for applications requiring sterility, they are supplied in irradiated tip racks.

Convenient sizes are available to fit 0.2 μ l-10 ml Finnpipettes. The tip filters are made of ultra-high molecular weight polyethylene, which is inert and non-sealing. This material is molded into a matrix to ensure effective particle entrapment.

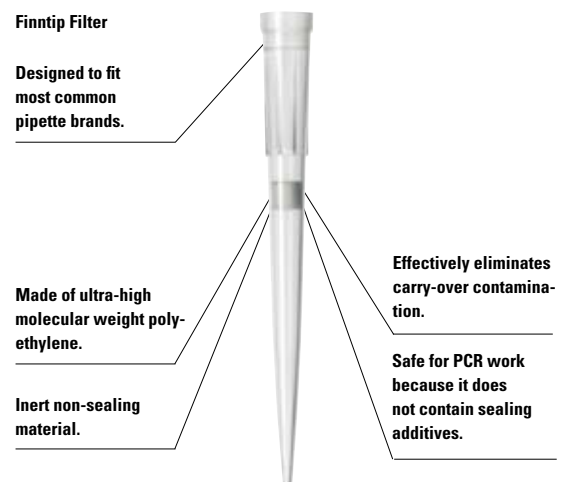
- The filter is made of ultra-high molecular weight polyethylene
- Filter tips are optimized for use with Finnpipettes
- Fits most common pipette brands

Comparison of Standard Tip and Finntip Filter



This figure shows the difference between Finntip Filter and a standard tip. The non-sealing filter prevents contamination of the pipette's shaft.

Special Features of Finntip Flex Filters



Thermo Scientific Finntip special tips

Finntip BioCon 10 μ l, 250 μ l and 1000 μ l

Designed for applications that demand the utmost in biological purity, the individually packed Finntip BioCon tips are guaranteed free of any biological contamination including endotoxins, DNA, DNase and RNase. They are pre-sterilized with gamma radiation, making them safe for medical, pharmaceutical and food industries, PCR applications, as well as molecular biology and cell technology. A certificate of quality is provided with each box.

Finntip Multistepper – 1500 μ l

Specially designed for use with the Finnpiquette Multi-stepper, this tip has a nominal volume of 1500 μ l, and accommodates standard 9 mm microplate spacing. Finntip Multi-steppers are also available in racks of 96 tips, and in sterile or non-sterile versions.

Finntip Wide – 10-250 μ l and 100-1000 μ l

With its wide orifice tip, the Finntip Wide is designed especially for pipetting fragile cell suspensions and macromolecules like genomic DNA. This tip eliminates the mechanical shearing that causes cell fragmenta-

tion. It is excellent for use with extremely viscous liquids. Depending on the model, the inside diameter of the orifice is 1.1 mm or 1.8 mm. The Finntip Wide is available in racks, and in sterile and non-sterile versions. Several packaging options are available including autoclavable racks and bags of 960 tips.

Finntip Stepper – 10-5000 μ l

The Finntip Stepper is a plunger-style tip for positive displacement pipetting. It is intended for use with the Finnpiquette Stepper. Seven sizes are available in sterile or non-sterile (non-autoclavable) versions.

Finntip PDP – 0.5-25 μ l and 20-200 μ l

Designed for use with the Finnpiquette PDP, this tip is intended for positive displacement applications. The preassembled tip and plunger prevent air from entering the tip and eliminate aerosol contamination.

NEW Finntip Pocket – 50 nl and 250 nl

The Finntip Pocket makes it possible to dispense nanoliter volumes with handheld pipettes. The tips have a molded pocket inside to allow transfer of compounds suspended in DMSO into an assay. The Finntip Pocket makes it possible to perform assays quicker because it eliminates the need for intermediate dilutions. It also reduces reagent costs through miniaturization and provides excellent mixing. The Finntip Pocket delivers 50 nl or 250 nl of compound in DMSO directly to selectivity assays (P450), potency determinations (IC50), cell-based or low-DMSO tolerant assays, kinetic assays, FRET assays, primary screening and others.

Demovideos available at www.thermo.fi/finnpiquette



Finntip Pocket



Thermo Scientific Finntip compatibility chart

	Finntip (sterile and non-sterile)													Finntip Filter (sterile)																									
	10 micro	10 Flex	50 micro	200 Ext	250 Univ.	300	300Flex	1000Ext	1000	1000Flex	1200Flex	5 ml	10ml	10ml Flex Ext.	10 micro	10 Flex	50 micro	10 Univ	20 Univ	30 Univ	30 Flex	100 Ext	100 Univ	100 Flex	200 Ext	200 Univ	300	300 Flex	1000 Ext	1000	1000 Flex	1200 Flex	5 ml	10ml	10ml Flex Ext.				
FP Novus 1 - 10 µl (4620 000) micro	•	•	•												•	•	•																						
FP Novus 1 - 10 µl (4620 010) univ.				•	•	•												•	•	•																			
FP Novus 5 - 50 µl (4620 020) micro			•														•																						
FP Novus 5 - 50 µl (4620 030) univ.				•	•	•	•																•	•	•			•	•										
FP Novus 10 - 100 µl				•	•	•	•																•	•	•	•		•	•										
FP Novus 30 - 300 µl						•	•																			•	•												
FP Novus 100 - 1000 µl								•	•	•	•																			•	•	•	•						
FP Novus 0.5 - 5 ml												•																							•				
FP Novus 1 - 10 ml													•	•																					•	•			
FP Novus 8-ch 1 - 10 µl micro	•	•	•												•	•	•																						
FP Novus 12-ch 1 - 10 µl micro	•	•	•												•	•	•																						
FP Novus 8-ch 5 - 50 µl				•	•																		•	•															
FP Novus 12-ch 5 - 50 µl				•	•																		•	•															
FP Novus 8-ch 30 - 300 µl						•	•																		•	•	•	•											
FP Novus 12-ch 30 - 300 µl						•	•																		•	•	•	•											
FP Novus 16-ch5 - 50 µl			•														•																						
FP Novus 8-ch 100 - 1200 µl											•																									•			
FP Focus* 0.3 - 3 µl	•	•	•												•	•	•																						
FP Focus* 0.5 - 5 µl	•	•	•												•	•	•																						
FP Focus* 1 - 10 µl micro	•	•	•												•	•	•																						
FP Focus* 1 - 10 µl Univ.				•	•	•	•											•	•	•	•																		
FP Focus* 3 - 30 µl micro		•	•													•	•																						
FP Focus* 3 - 30 µl Univ.				•	•	•	•												•	•																			
FP Focus* 5 - 50 µl micro			•													•																							
FP Focus* 5 - 50 µl Univ.				•	•	•	•																•	•	•			•	•										
FP Focus* 10 - 100 µl				•	•	•	•																•	•	•	•		•	•										
FP Focus* 30 - 300 µl						•	•																		•	•	•	•											
FP Focus* 100 - 1000 µl								•	•	•	•																			•	•	•	•						
FP Focus* 0.5 - 5 ml												•																								•			
FP Focus* 1 - 10 ml													•	•																						•	•		
FP Focus* 8-ch 1 - 10 µl	•	•	•												•	•	•																						
FP Focus* 12-ch 1 - 10 µl	•	•	•												•	•	•																						
FP Focus* 8-ch 5 - 50 µl				•	•																		•	•															
FP Focus* 12-ch 5 - 50 µl				•	•																		•	•															
FP Focus* 8-ch 30 - 300 µl				•	•	•	•																		•	•	•	•											
FP Focus* 12-ch 30 - 300 µl				•	•	•	•																		•	•	•	•											
FP Focus* 16-ch 5 - 50 µl			•														•																						
FP Digital 0.2 - 2 µl micro	•	•	•												•	•	•																						
FP Digital 0.5 - 10 µl micro	•	•	•												•	•	•																						
FP Digital 0.5 - 10 µl univ.				•	•														•	•	•	•																	
FP Digital 2 - 20 µl				•	•																																		
FP Digital 5 - 50 µl				•	•	•	•																	•	•	•													
FP Digital 10 - 100 µl				•	•	•	•																	•	•	•													
FP Digital 20 - 200 µl				•	•	•	•																		•	•	•	•											
FP Digital 100 - 1000 µl								•	•	•	•																			•	•	•	•						
FP Digital 200 - 1000 µl								•	•	•	•																			•	•	•	•						
FP Digital 1 - 5 ml												•																								•			
FP Digital 2 - 10 ml													•	•																						•	•		
FP Digital 8-ch 0.5 - 10 µl	•	•	•												•	•	•																						
FP Digital 12-ch 0.5 - 10 µl	•	•	•												•	•	•																						
FP Digital 8-ch 5 - 50 µl				•	•																			•	•														
FP Digital 12-ch 5 - 50 µl				•	•																			•	•														
FP Digital 8-ch 50 - 300 µl				•	•	•																			•	•	•	•											
FP Digital 12-ch 50 - 300 µl				•	•	•																			•	•	•	•											
FP Digital 16-ch 5 - 50 µl			•														•																						

*Long and short models FP = Finnipette ch = channel

Thermo Scientific Finntip ordering information

Finntip 10



Cat. no.	Description	Quantity
9400 310	Finntip 10	1000/bag
9400 300	Finntip 10	10x96/rack
9400 303	Finntip 10 sterile*	10x96/rack
9400 326	Finntip 10 refill starter kit	4x192/rack + 10x192/refill
9400 327	Finntip 10 refill kit	20x192/refill

Color code: Pink Length: 3.2 cm

Finntip 50



Cat. no.	Description	Quantity
9400 360	Finntip 50	1000/bag
9400 370	Finntip 50	10x384/rack
9400 373	Finntip 50 sterile*	10x384/rack

Color code: Turquoise Length: 4.8 cm

Finntip 200 Ext



Cat. no.	Description	Quantity
9400 100	Finntip 200 Ext	400/box
9400 130	Finntip 200 Ext	10x96/rack
9400 133	Finntip 200 Ext sterile*	10x96/rack

Color code: Orange Length: 7.8 cm

Finntip 300



Cat. no.	Description	Quantity
9401 260	Finntip 300	1000/bag
9401 240	Finntip 300	20 000/bulk
9401 250	Finntip 300	10x96/rack
9401 253	Finntip 300 sterile*	10x96/rack
9401 255	Finntip 300 refill pack	10x192/pack

Color code: Orange Length: 5.2 cm

Finntip 250 Universal



Cat. no.	Description	Quantity
9400 250	Finntip 250 Universal	500/box
9400 230	Finntip 250 Universal	1000/bag
9400 220	Finntip 250 Universal	20 000/bulk
9400 260	Finntip 250 Universal	10x96/rack
9400 263	Finntip 250 Universal sterile*	10x96/rack
9400 266	Finntip 250 Universal refill starter kit	4x96/rack + 10x96/refill
9400 267	Finntip 250 Universal refill kit	20x96/refill

Color code: Yellow Length: 5.2 cm

Finntip 1000



Cat. no.	Description	Quantity
9401 030	Finntip 1000	1000/bag
9401 010	Finntip 1000	10 000/bulk
9401 070	Finntip 1000	200/box
9401 110	Finntip 1000	10x96/rack
9401 113	Finntip 1000 sterile*	10x96/rack
9401 115	Finntip 1000 refill pack	5x192/pack

Color code: Blue Length: 7.1 cm

Finntip 1000 Ext



Cat. no.	Description	Quantity
9401 410	Finntip 1000 Ext	1000/bag
9401 420	Finntip 1000 Ext	5x96/rack
9401 423	Finntip 1000 Ext sterile	5x96/rack

Color code: Blue Length: 10.5 cm

Finntip 5 ml



Cat. no.	Description	Quantity
9402 050	Finntip 5 ml	75/box
9402 030	Finntip 5 ml	500/bag
9402 010	Finntip 5 ml	3000/bulk
9402 070	Finntip 5 ml	5x54/rack
9402 073	Finntip 5 ml sterile	5x54/rack

Color code: Green Length: 14.7 cm

Finntip 10 ml



Cat. no.	Description	Quantity
9402 150	Finntip 10 ml	40/box
9402 151	Finntip 10 ml	100/bag
9402 160	Finntip 10 ml	5x24/rack
9402 163	Finntip 10 ml sterile	5x24/rack

Color code: Red Length: 15.0 cm

Finntip Filter



Cat. no.	Description	Volume	Quantity
94052 000	Finntip Filter Micro 10 µl sterile*	0.2-10 µl	10x96/rack
94052 060	Finntip Filter Micro 50 µl sterile	0.2-50 µl	10x384/rack
94052 100	Finntip Filter 10 µl sterile	0.5-10 µl	10x96/rack
94052 150	Finntip Filter 20 µl sterile	0.5-20 µl	10x96/rack
94052 160	Finntip Filter 30 µl sterile	0.3-30 µl	10x96/rack
94052 200	Finntip Filter 100 µl sterile	0.5-100 µl	10x96/rack
94052 310	Finntip Filter 100 µl Ext sterile	5-100 µl	10x96/rack
94052 300	Finntip Filter 200 µl sterile	0.5-200 µl	10x96/rack
94052 320	Finntip Filter 200 µl Ext sterile	5-200 µl	10x96/rack
94052 350	Finntip Filter 300 µl sterile	5-300 µl	10x96/rack
94052 410	Finntip Filter 1000 µl sterile	100-1000 µl	10x96/rack
94052 430	Finntip Filter 1000 µl Ext sterile	100-1000 µl	5x96/rack
94052 550	Finntip Filter 5 ml sterile	0.5-5 ml	5 x 54/rack
94052 600	Finntip Filter 10 ml sterile	1-10 ml	5 x 24/rack

* Finntip steriles are certified to be free of Endotoxin, DNA, DNase and RNase

Thermo Scientific Finntip ordering information

NEW Finntip Flex 10



Cat. no.	Description	Quantity
94060120	Finntip Flex 10	1000/bag
94060100	Finntip Flex 10	10x96/rack
94060103	Finntip Flex 10 sterile*	10x96/rack
94060116	Finntip Flex 10 refill starter kit	10x96/rack + 20x96/refill
94060117	Finntip Flex 10 refill	20x96/refill

Color code: Pink Length: 3.3 cm

Finntip Flex 300



Cat. no.	Description	Quantity
94060510	Finntip Flex 300	10x96/rack
94060513	Finntip Flex 300 sterile*	10x96/rack
94060516	Finntip Flex 300 refill starter kit	1x96/rack + 20x96/refill
94060517	Finntip Flex 300 refill kit	20x96/refill
94060520	Finntip Flex 300	1000/bag

Color code: Orange Length: 6.0 cm

Finntip Flex 1000



Cat. no.	Description	Quantity
94060710	Finntip Flex 1000	10x96/rack
94060713	Finntip Flex 1000 sterile*	10x96/rack
94060716	Finntip Flex 1000 refill starter kit	1x96/rack + 16x96/refill
94060717	Finntip Flex 1000 refill kit	16x96/refill
94060720	Finntip Flex 1000	1000/bag

Color code: Blue Length: 8.7 cm

Finntip Flex 1200



Cat. no.	Description	Quantity
94060810	Finntip Flex 1200	10x96/rack
94060813	Finntip Flex 1200 sterile*	10x96/rack
94060816	Finntip Flex 1200 refill starter kit	16x96/refill + 1x96/rack
94060817	Finntip Flex 1200 refill kit	16x96/refill
94060820	Finntip Flex 1200	1000/bag

Color code: Turquoise Length: 8.7 cm

Finntip Flex 10 ml Extended



Cat. no.	Description	Quantity
94060970	Flex 10ml Ext	100/bag
94060973	Flex 10ml Ext sterile	50/bag

Length: 26.7 cm

Finntip Flex - Filter Pipette Tips



Cat. no.	Description	Volume	Quantity
94056980	Flex Filter 10 sterile*	0.2-10	10x96 rack
94056510	Flex Filter 30 sterile*	5-30	10x96 rack
94056520	Flex Filter 100 sterile*	5-100	10x96 rack
94056580	Flex Filter 300 sterile*	5-300	10x96 rack
94056710	Flex Filter 1000 sterile*	100-1000	10x96 rack
94056810	Flex Filter 1200 sterile*	50-1200	10x96 rack
94056970	Flex Filter 10 ml Ext sterile	1-10 ml	50/bag

Finntip Pocket



Cat No.	Description	Quantity
94035510	Finntip Pocket 50 nl	10x96 tips/rack
94035520	Finntip Pocket 50 nl	1x96 tips/rack
94035550	Finntip Pocket 250 nl	10x96 tips/rack
94035560	Finntip Pocket 250 nl	1x96 tips/rack

Finntip Multistep



Cat. no.	Description	Quantity
9401 300	Finntip Multistep	400/box
9401 330	Finntip Multistep	10x96/rack
9401 333	Finntip Multistep sterile	10x96/rack

Color code: Turquoise Length: 8.5 cm

Finntip Stepper



Cat. no.	Volume	Dispensing volume	Quantity
9404 170	0.5 ml	10, 20, 30, 40, 50 µl	100/box
9404 173	0.5 ml sterile	10, 20, 30, 40, 50 µl	50/box
9404 180	1.25 ml	25, 50, 75, 100, 125 µl	100/box
9404 183	1.25 ml sterile	25, 50, 75, 100, 125 µl	50/box
9404 190	2.5 ml	50, 100, 150, 200, 250 µl	100/box
9404 193	2.5 ml sterile	50, 100, 150, 200, 250 µl	50/box
9404 200	5.0 ml	100, 200, 300, 400, 500 µl	50/box
9404 203	5.0 ml sterile	100, 200, 300, 400, 500 µl	25/box
9404 210	12.5 ml	250, 500, 750, 1000, 1250 µl	50/box
9404 213	12.5 ml sterile	250, 500, 750, 1000, 1250 µl	25/box
9404 220	25 ml	500, 1000, 1500, 2000, 2500 µl	20box
9404 223	25 ml sterile	500, 1000, 1500, 2000, 2500 µl	10/box
9404 230	50 ml	1000, 2000, 3000, 4000, 5000 µl	10/box
9404 233	50 ml sterile	1000, 2000, 3000, 4000, 5000 µl	10/box

Finntip BioCon *



Cat. no.	Description	Volume	Quantity
94053 100	Finntip BioCon 10	0.2-10 µl	100/box
94053 200	Finntip BioCon 250	0.5-250 µl	100/box
94053 300	Finntip BioCon 1000	100-1000 µl	50/box

* Finntip BioCons are certified to be free of Endotoxin, DNA, DNase and RNase

Finntip Wide



Cat. no.	Description	Volume	Quantity
9405 020	Finntip 250 Wide	10-250 µl	1000/bag
9405 030	Finntip 250 Wide	10-250 µl	22000/bulk
9405 120	Finntip 250 Wide	10-250 µl	10x96/rack
9405 123	Finntip 250 Wide sterile	10-250 µl	10x96/rack
9405 050	Finntip 1000 Wide	100-1000 µl	400/bag
9405 060	Finntip 1000 Wide	100-1000 µl	6500/bulk
9405 160	Finntip 1000 Wide	100-1000 µl	10x96/rack
9405 163	Finntip 1000 Wide sterile	100-1000 µl	10x96/rack

Color Code: White Length: 5.3 cm / 7.2 cm

* Finntip steriles are certified to be free of Endotoxin, DNA, DNase and RNase